



220 Huff Ave, Suite 400  
Greensburg, PA 15601



PH: (724) 552-4904  
F: (724) 552-4905



sales@agdisplays.com  
agdisplays.com



Advanced LCD Solutions Specialist

# CUSTOMIZED RUGGED MOBILE



**CUSTOMIZABLE  
OR OFF THE SHELF  
RUGGED MOBILE DEVICES**

# Industrial Strength



## RUGGED DESIGN

- + WATERPROOF
- + DROPPROOF
- + DUSTPROOF

## TOUCHSCREEN

- + CAPACITIVE
- + MULTI TOUCH
- + IPS TECHNOLOGY

## HIGH PERFORMANCE

- + HIGH DEFINITION
- + IP RATED
- + MULTI-CAMERA

NOTE: specifications subject to change without notice.

# Customize Features



## CUSTOMIZED PRE-LOADED APPS

Pre-load with specific or custom-created apps. Note: AG Displays does not develop apps.

## PRINTED LOGO ON BACK

Customer-provided text or image can be printed with ink onto the device. Requirements subject to device model.

## LOGO SPLASH SCREEN ON START UP

Customer-provided text or image will appear on-screen during device boot up.

## DEFAULT SETTINGS CHANGED

Setting preferences can be customized before reaching the user, i.e., security passcode or location settings.

## PLASTIC: CUSTOM PANTONE COLOR

Device may be manufactured to match Pantone colors.



NOTE: specifications subject to change without notice.

# Customize Features



## Software Customizations

### SPLASH SCREEN

A customer-provided logo, text, or image can be loaded into the device software to appear on splash screen as the device boots up.

### PART NUMBER

Indicate your specific part number to appear in the device's About section in the settings menu.

### DEFAULT SETTINGS

Setting preferences can be customized before reaching the user for security and device safety. Pre-set a numerical or pattern passcode, or configure location settings. Adjust screen settings and battery saving options for device longevity.

### PRE-LOADED APPS

Pre-load your device with select or custom-developed apps. Note: AG Displays does not develop apps. We are not involved in coding, or troubleshooting customer apps beyond normal hardware assistance.

### FACTORY MODE

Factory mode allows you to test the hardware of the device. Factory mode tests include: device info, memory & SIM, LCD, key, vibration, touch, flashlight/backlight, FM radio, audio circuit, speaker, receiver, power info, camera, accelerometer, BT, WIFI, GPS, RTF. Additional test modes available.

### GOOGLE SERVICES

Google Services are added at the request of customer. Apps can include Google Play, Music, Sheets, Docs, Chrome, Drive, Gmail, Books, Keep, Maps, Voice, Hang Outs, Photos, Earth, YouTube and more.

### UPON REQUEST

Don't see a customization you had in mind? Our experts work hard to meet your needs. If you have a specific request, talk to an AGD team member and we will do our best to accommodate your requirements.



NOTE: specifications subject to change without notice.

# Customize Features

## *Hardware Customizations*



### **LOGO SCREEN PRINT**

Customer provides text or image to be silk screened onto back of device. Printed label option also available.

### **RUBBER CASE**

Protective rubber casings can be manufactured in any Pantone color.

### **PLASTICS COLOR**

Device can be manufactured in a specific Pantone color.

### **NFC/RFID**

NFC or RFID reading capabilities can be added or removed from a device

### **SYSTEM ON CHIP (SOC) OPTIONS**

Interchangeable Rockchip SOC for wall mount devices. The Rockchip is a cost-effect, mid-range SOC for tablets combining a powerful GPU with CPU for a high-performing, power conserving device.

### **ANDROID OPTIONS**

We offer various Android software versions, based on CPU compatibility.

### **SDK SOFTWARE**

We provide software that allows for support in application development. Note, AGDisplays does not aid in actual application development.

### **RAM OPTIONS**

Select devices have multiple RAM and internal memory options available.

### **COM PORT**

USB port may be added or removed.

### **CAMERA**

Cameras can be added, removed or upgraded according to processor compatibility.

### **BATTERY**

Battery can be replace with direct DC power.

**NOTE:** specifications subject to change without notice.

# AG050S-A-D-4-2-IP68-V1



The 5 inch AG050S-A-D-4-2-IP68-V1 features an Android 8.1 operating system, and a built in Mediatek MTK6739 Quad-core 1.3GHz processor for fast performance without boosting clock speed.

**Customization Options:**

- Software: preloaded apps, custom settings, part number change, custom logo
- Hardware: custom plastic color, rubber case



<b>CPU</b>	Mediatek MTK6739 Quad-core 1.3 GHz	<b>Battery</b>	3750 mAh Lithium Battery
<b>Operating System</b>	Android 8.1	<b>Rugged Durability</b>	IP68 Waterproof and dust-proof, DropProof Rate: 810G
<b>Display &amp; Touch</b>	5 inch capacitive multi-touch screen, TN 960x480 Pixels	<b>Sensors</b>	G-sensor, light sensor, proximity sensor, gyroscope sensor
<b>Cameras</b>	Front 5 M pxls, Back 8 M pxls	<b>NFC Function</b>	Frequency is 13.56 MHZ
<b>Memory &amp; Storage</b>	2GB RAM + 16GB Internal storage	<b>Fingerprint</b>	Support
<b>WIFI</b>	802.11 a/b/g/n 2.4G+5Ghz Dual-band wifi wireless and bluetooth 4.0	<b>PTT Function</b>	Optional
<b>GPS</b>	Support GPS and GLONASS or GPS+Beidou	<b>Dimensions</b>	152.2x73.3x16.1 mm

NOTE: specifications subject to change without notice.

# AG050S-A-F-8-3-IP68-V1



The 5 inch AG050S-A-F-8-3-IP68-V1 features an Android 8.1 operating system, and a built in Mediatek MTK6750 Octa-core 1.5GHz processor for fast performance without boosting clock speed.

**Customization Options:**

- Software: preloaded apps, custom settings, part number change, custom logo
- Hardware: custom plastic color, rubber case



<b>CPU</b>	Mediatek MTK6750 Octa-core 1.5GHz	<b>GPS</b>	Support GPS and GLONASS
<b>Operating System</b>	Android 7.0 or 8.1	<b>Battery</b>	Built-in 5000 mAh Lithium Battery
<b>Display &amp; Touch</b>	5 inch Capacitive Multi-touch screen, IPS FHD 1920x1080 Pixels	<b>Rugged Durability</b>	IP68 Waterproof and dust-proof, DropProof Rate: 810G
<b>Cameras</b>	Front 5Mpxls camera, Back 13Mpxls camera	<b>Sensors</b>	G-sensor, Light sensor, Proximity sensor, E-Compass, Gyroscope Sensor
<b>Memory &amp; Storage</b>	3GB RAM + 32GB Internal storage, 4G RAM + 64G Internal storage is optional	<b>NFC Function</b>	Frequency is 13.56 MHZ
<b>WIFI</b>	802.11 a/b/g/n 2.4G+5Ghz Dual-band wifi wireless and bluetooth 4.0	<b>SOS Function</b>	Support
<b>Dual SIM Card</b>	Support	<b>PTT Function</b>	Optional
		<b>Dimensions</b>	152x77x16.5 mm

NOTE: specifications subject to change without notice.

# AG052S-A-F-8-6-IP68-V1



The 5.2 inch AG052S-A-F-8-6-IP68-V1 features an Android 8.1 operating system, and a built in Mediatek MTK6757 Helio P25 Octa-core Cortex-A53 2.5GHz processor for fast performance without boosting clock speed.

**Customization Options:**

- Software: preloaded apps, custom settings, part number change, custom logo
- Hardware: custom plastic color, rubber case



<b>CPU</b>	Mediatek MTK6757 Helio P25 Octa-core Cortex-A53 2.5 GHz	<b>Dual SIM Card</b>	Support
<b>Operating System</b>	Android 8.1	<b>Battery</b>	5580 mAh Lithium Battery
<b>Display &amp; Touch</b>	5.2 inch capacitive multi-touch screen, IPS FHD 1920x1080 pixels	<b>Rugged Durability</b>	IP68 waterproof and dust-proof, dropproof rate: 810G
<b>Cameras</b>	Front 8 M camera, back 21 M Camera	<b>Sensors</b>	G-sensor, light sensor, proximity sensor, E-Compass, gyroscope sensor, geomagnetism
<b>Memory &amp; Storage</b>	6 GB RAM + 64 GB Internal storage	<b>NFC Function</b>	Frequency is 13.56 MHZ
<b>WIFI</b>	802.11 a/b/g/n 2.4G+5G Dual-band wifi wireless and blue-tooth 4.0	<b>Fingerprint</b>	Support
		<b>Dimensions</b>	164x81x15.5 mm

NOTE: specifications subject to change without notice.



# AG055S-A-H-8-4-IP68-V1



The 5.5 inch AG055S-A-H-8-4-IP68-V1 features an Android 8.1 operating system, and a built in Mediatek MTK6763 Octa-core Cortex-A53 2.0GHz processor for fast performance without boosting clock speed.

**Customization Options:**

- Software: preloaded apps, custom settings, part number change, custom logo
- Hardware: custom plastic color, rubber case



<b>CPU</b>	Mediatek MTK6763 Octa-core Cortex-A53 2.0GHz	<b>GPS</b>	Support GPS & GLONASS or GPS + Beidou
<b>Operating System</b>	Android 8.1	<b>Battery</b>	3600 mAh lithium battery
<b>Display &amp; Touch</b>	5.5 inch Capacitive Multi-touch screen, IPS HD 1280x640 Pixels	<b>Rugged Durability</b>	IP68
<b>Cameras</b>	Front 8M pxls, back 13M pxls	<b>Sensors</b>	G-sensor, light sensor, proximity sensor, gyroscope sensor
<b>Memory &amp; Storage</b>	4GB RAM + 64GB Internal storage	<b>NFC Function</b>	Frequency is 13.56 MHZ
<b>WIFI</b>	802.11 a/b/g/n 2.4G + 5Ghz Dual-band wifi wireless and bluetooth 4.2	<b>Fingerprint</b>	Support
		<b>PTT Function</b>	Support
		<b>Dimensions</b>	155.2x74.6x11.9 mm

NOTE: specifications subject to change without notice.

# AG055S-A-H-8-4-IP68-V2



The 5.5 inch AG055S-A-H-8-4-IP68-V2 features an Android 8.0 operating system, and a built in Mediatek MTK6750T Octa-core Cortex-A53 1.5GHz processor for fast performance without boosting clock speed.

**Customization Options:**

- Software: preloaded apps, custom settings, part number change, custom logo
- Hardware: custom plastic color, rubber case



<b>CPU</b>	Mediatek MTK6750T Octa-core Cortex-A53 1.5GHz	<b>Dual SIM Card</b>	Supported
<b>Operating System</b>	Android 8.0	<b>GPS</b>	Support GPS and GLONASS
<b>Display &amp; Touch</b>	5.5 inch capacitive multi-touch screen, IPS 1440x720 Pixels	<b>Battery</b>	5500mAh Lithium Battery
<b>Cameras</b>	Dual-rear 13MP & 8 MP, Front 5 MP	<b>Rugged Durability</b>	IP68 Waterproof and Dust-proof, DropProof Rate: 810G
<b>Memory &amp; Storage</b>	4GB RAM + 64GB Internal storage	<b>Sensors</b>	G-sensor, Light sensor, Proximity sensor, E-Compass, GyroscopeSensor, Geomagnetism
<b>WIFI</b>	802.11 a/b/g/n 2.4G + 5Ghz dual-band wifi wireless and bluetooth 4.0	<b>USB Interface</b>	1 x Micro USB
		<b>Dimensions</b>	161.3 x 77.8 x 14.2 mm

NOTE: specifications subject to change without notice.

# AG055S-A-F-8-4-IP68-V1



The 5.5 inch AG055S-A-F-8-4-IP68-V1 features an Android 7.0 operating system, and a built in Mediatek MTK6755 Octa-core Cortex-A53 2.0GHz processor for fast performance without boosting clock speed.

**Customization Options:**

- Software: preloaded apps, custom settings, part number change, custom logo
- Hardware: custom plastic color, rubber case



<b>CPU</b>	MTK6755 Octa-core Cortex-A53 2.0GHz
<b>Operating System</b>	Android 7.0
<b>Display &amp; Touch</b>	5.5 inch Capacitive Multi-touch screen,IPS FHD 1920*1080 Pixels
<b>Cameras</b>	Front 8M pxls, back 16M pxls
<b>Memory &amp; Storage</b>	4GB RAM + 64GB Internal storage, micro SD card slot can support max 128GB TF card
<b>WIFI</b>	802.11 a/b/g/n 2.4G+5G Dual-band wifi wireless and blue-tooth 4.0
<b>Battery</b>	6150 mAh Lithium Battery

<b>PTT Function</b>	Support
<b>GPS</b>	Support GPS & GLONASS or GPS+Beidou
<b>Tri-Proof Rate</b>	IP68 Waterproof and dust-proof, DropProof Rate: 810G
<b>Sensors</b>	G-sensor, Light sensor, Proximity sensor, E-Compass, Pressure sensor, Gyroscope Sensor
<b>NFC function</b>	Frequency is 13.56MHZ
<b>Fingerprint</b>	Support
<b>Dims &amp; Weight</b>	168x86x17mm, N.W: about 260g

NOTE: specifications subject to change without notice.

# AG055S-A-F-8-4-IP68-V2



The 5.5 inch AG055S-A-F-8-4-IP68-V2 features an Android 7.0 operating system, and a built in MTK6750V/CT Octa-core Cortex-A53 1.5GHz; processor for fast performance without boosting clock speed.

**Customization Options:**

- Software: preloaded apps, custom settings, part number change, custom logo
- Hardware: custom plastic color, rubber case



<b>CPU</b>	Mediatek MTK6750V/CT Octa-core Cortex-A53 1.5GHz
<b>Operating System</b>	Android 7.0, (In future can upgrade to 8.1)
<b>Display &amp; Touch</b>	5.5 inch Capacitive Multi-touch screen, IPS FHD 1920x1080 Pixels
<b>Cameras</b>	Front 5M pxls, back 13M pxls
<b>Memory &amp; Storage</b>	4GB RAM + 64GB Internal storage
<b>WIFI</b>	802.11 a/b/g/n 2.4G + 5G Dual-band wifi wireless and bluetooth 4.0
<b>Dual SIM Card</b>	Support

<b>GPS</b>	Support GPS & GLONASS
<b>Battery</b>	9000 mAh lithium battery
<b>Rugged Durability</b>	IP68
<b>Sensors</b>	G-sensor, Light sensor, Proximity sensor, E-Compass, Gyroscope Sensor
<b>NFC Function</b>	Frequency is 13.56 MHZ
<b>Fingerprint</b>	Support
<b>PTT Function</b>	Optional
<b>Dimensions</b>	168.8x86.5x15.9 mm

NOTE: specifications subject to change without notice.

# AG055S-A-F-8-4-IP65-V1



The 5.5 inch AG055S-A-F-8-4-IP65-V1 features an Android 7.1 operating system, and a built in Qualcomm MSM8953 Octa-core 1.8GHZ-2.0GHz processor for fast performance without boosting clock speed.

**Customization Options:**

- Software: preloaded apps, custom settings, part number change, custom logo
- Hardware: custom plastic color, rubber case



<b>CPU</b>	Qualcomm MSM8953 Octa-core 1.8 GHZ-2.0 GHz
<b>Operating System</b>	Android 7.1, Android 8.1 in the future
<b>Display &amp; Touch</b>	5.5inch capacitive multi-touch IPS FHD 1920x1080
<b>Cameras</b>	Front 5.0 M camera, back 13.0 M camera
<b>Memory &amp; Storage</b>	Default is 4G RAM + 32 G Internal storage, (2G+16G, 3G+32G, 4G RAM+64G Internal storage is optional)
<b>WIFI</b>	802.11 a/b/g/n 2.4Ghz + 5Ghz dual-band wifi wireless and bluetooth 4.2
<b>Navigation &amp; Location</b>	Support GPS / Glonass or Beidou
<b>Battery</b>	Built-in 6000mAh Lithium Battery
<b>Rugged Durability</b>	Waterproof and dustproof rate: IP65; Ruggedness: 810G compliant

<b>Infrared Module</b>	Built-in infrared module to collect Electric meter data: send & receive frequency: 38 KHz, send & receive angle: +/- 45 degree, distance >=10 Meters, sending max power: 160 mw; optional
<b>NFC Module</b>	Frequency is 13.56 Mhz
<b>2D Barcode Scanner</b>	Optional
<b>UHF RFID</b>	Readable distance is about 3-5Meters, optional; R2000 Module (readable distance is about 10 meters) is also optional
<b>I/O Ports</b>	1*MICRO USB, 1*SIM Slot, 1*RS485 Communication port (optional).
<b>Scan Trigger</b>	Optional
<b>Temp &amp; Humidity</b>	Work temp.: -20-50°C, storage temp.: -20-70°C; humidity: 5%-95%

NOTE: specifications subject to change without notice.

# AG055S-A-H-8-2-IP68-V1



The 5.5 inch AG055S-A-H-8-2-IP68-V1 features an Android 7.1 operating system, and a built in Qualcomm MSM8953 Octa-core 2.0GHz processor for fast performance without boosting clock speed.

**Customization Options:**

- Software: preloaded apps, custom settings, part number change, custom logo
- Hardware: custom plastic color, rubber case



<b>CPU</b>	Qualcomm MSM8953 Octa-core 2.0GHz
<b>Operating System</b>	Android 7.1, Android 8.1 in the future
<b>Display &amp; Touch</b>	5.5 inch Capacitive Multi-touch IPS HD 1280x720 FHD screen, 1920x1080 is optional
<b>Cameras</b>	Front 5.0 M camera, Back 13.0 M Camera
<b>Memory &amp; Storage</b>	2G RAM + 16G Internal storage, 4G RAM+64G Internal storage is optional
<b>WIFI</b>	a/b/g/n wireless and Blue-tooth 4.2
<b>NFC Module</b>	Frequency is 13.56 Mhz, optional
<b>GPS</b>	GPS, GLONASS, Beidou
<b>Battery</b>	Built-in 5000 mAh Lithium Battery
<b>2D Barcode Scanner</b>	Optional

<b>Sensors</b>	G-sensor, Gyro-sensor, Compass-sensor
<b>Walkie Talkie</b>	Digital + analog 2 in 1, is optional; infrared and walkie-talkie, pick one of two
<b>Fingerprint Scanner</b>	Capacitive fingerprint scanner 508DPI, FBI certificated, optional
<b>Rugged Durability</b>	Waterproof and dustproof rate: IP68; Ruggedness: comply with 810G
<b>ID Card Reader Module</b>	Optional; ID card and UHF RFID only pick one of two
<b>Back-clip UHF RFID</b>	Readable distance is about 3-5Meters, Optional; R2000 Module is also optional
<b>I/O Ports</b>	1*MICRO USB, 1*SIM Slot, 1*PSAM Slot (optional), 1*RS485 Communication port (optional)
<b>Face Recognition</b>	Optional; works with ID Card

NOTE: specifications subject to change without notice.

# AG057S-A-F-8-6-IP68-V1



The 5.7 inch AG057S-A-F-8-6-IP68-V1 features an Android 8.1 operating system, and a built in Mediatek MTK6763 Octa-core Cortex-A53 2.0GHz processor for fast performance without boosting clock speed.

**Customization Options:**

- Software: preloaded apps, custom settings, part number change, custom logo
- Hardware: custom plastic color, rubber case



<b>CPU</b>	Mediatek MTK6763 Octa-core Cortex-A53 2.0GHz	<b>GPS</b>	Support GPS & GLONASS or GPS + Beidou
<b>Operating System</b>	Android 8.1	<b>Battery</b>	5000 mAh lithium battery
<b>Display &amp; Touch</b>	5.7 inch capacitive multi-touch screen, IPS FHD 2160x1080 Pixels	<b>Rugged Durability</b>	IP68 waterproof and dust-proof, dropproof rate: 810G
<b>3 Cameras</b>	Front 8M pxls, back 13M + 5M pxls dual camera	<b>Sensors</b>	G-sensor, light sensor, proximity sensor, E-Compass, gyroscope sensor
<b>Memory &amp; Storage</b>	6GB RAM + 128GB Internal storage, micro SD card slot can support max 128GB TF card	<b>NFC Function</b>	Frequency is 13.56 MHZ
<b>WIFI</b>	802.11 a/b/g/n 2.4G+5Ghz Dual-band wifi wireless and bluetooth 4.2	<b>Fingerprint</b>	Support
		<b>PTT Function</b>	Support
		<b>Dimensions</b>	167x78x13.8 mm

NOTE: specifications subject to change without notice.

# AG057S-A-H-8-4-IP68-V1



The 5.7 inch AG057S-A-H-8-4-IP68-V1 features an Android 8.1 operating system, and a built in Mediatek MTK6763 Octa-core Cortex-A53 2.0GHz processor for fast performance without boosting clock speed.

**Customization Options:**

- Software: preloaded apps, custom settings, part number change, custom logo
- Hardware: custom plastic color, rubber case



<b>CPU</b>	Mediatek MTK6763 Octa-core Cortex-A53 2.0GHz	<b>Battery</b>	4800mAh Lithium Battery
<b>Operating System</b>	Android 8.1	<b>Rugged Durability</b>	IP68 Waterproof and dust-proof, DropProof Rate: 810G
<b>Display &amp; Touch</b>	5.7 inch Capacitive Multi-touch screen, IPS FHD 1440x720 Pixels	<b>GPS</b>	Supports GPS, GLONASS, GPS+Beidou
<b>Cameras</b>	Front 8Mpxls camera, Back 13M+0.3Mpxls dual camera	<b>Sensors</b>	G-sensor, Light sensor, Proximity sensor, E-Compass, Gyroscope Sensor
<b>Memory &amp; Storage</b>	4GB RAM + 64GB Internal storage, micro SD card slot can support max 128GB TF card	<b>WIFI</b>	802.11 a/b/g/n 2.4 G+5 Ghz Dual-band wifi wireless and bluetooth 4.2
<b>Fingerprint</b>	Supported	<b>Dims &amp; Weight</b>	157x76x13mm, N.W: about 260g
<b>NFC Function</b>	Frequency is 13.56 Mhz	<b>Dimensions</b>	172x81x13.6 mm

NOTE: specifications subject to change without notice.



# AG059S-A-F-8-4-IP68-V1



The 5.99 inch AG059S-A-F-8-4-IP68-V1 features an Android 8.1 operating system, and a built in Mediatek MT-K6763T Helio P23 Octa-core 2.5GHz processor for fast performance without boosting clock speed.

**Customization Options:**

- Software: preloaded apps, custom settings, part number change, custom logo
- Hardware: custom plastic color, rubber case



<b>CPU</b>	Mediatek MTK6763T Helio P23 Octa-core 2.5GHz	<b>GPS</b>	Support GPS and GLONASS
<b>Operating System</b>	Android 8.1	<b>Battery</b>	5500mAh Lithium Battery
<b>Display &amp; Touch</b>	5.99 inch capacitive multi-touch screen, IPS FHD 2160x1080 Pixels	<b>Rugged Durability</b>	IP68 Waterproof and dust-proof, DropProof Rate: 810G
<b>Cameras</b>	Front 8M pxls, back 13M + 8M pxls dual camera	<b>Sensors</b>	G-sensor, Light sensor, Proximity sensor, E-Compass, Gyroscope Sensor, Geomagnetism, Barometer, Coulometer
<b>Memory &amp; Storage</b>	4GB RAM + 64GB Internal storage	<b>Fingerprint</b>	Support
<b>WIFI</b>	802.11 a/b/g/n 2.4G+5G Dual-band wifi wireless and bluetooth 4.0	<b>NFC Function</b>	Frequency is 13.56 MHZ
<b>Dual SIM Card</b>	Supported	<b>Dimensions</b>	172x81x13.6 mm

NOTE: specifications subject to change without notice.

# AG070-A-WX-4-2-IP54-V1



AG070-A-WX-4-2-IP68-V1 is a 7.0" rugged tablet with Android 5.1 operating system, a Quad-Core MediaTek MTK6735 CPU, and WXGA 1280 x 800 resolution. AG070-A-WX-4-2-IP68-V1 features an IP68 ingress protection rating, dual SIM card slots, NFC compatibility, and a rechargeable Lithium battery.

**Customization Options:**

- Software: preloaded apps, custom settings, part number change, custom logo
- Hardware: custom plastic color, rubber case



**CPU** MediaTek MTK6735 Quad-core, Cortex-A7 1.3GHz

**Operating System** Android 6.0

**Rugged Durability** IP54 rating

**Display & Touch** 7 inch TFT-LCD Capacitive Multi-touch 1280 x 800 resolution

**Cameras** 2.0 MP Front / 5.0 MP Rear

**Memory & Storage** 2 GB RAM + 16 GB Internal storage

**NFC Function** 13.56Mhz

**Battery** Lithium 8800mAh

**Wifi** 802.11 b/g/n

**GPS** GPS + GLONASS

**USB interface** 3 x Micro USB

**Sensors** Optional: NFC, 2D barcode, fingerprint, iris

**Network** "4G Networks: Support GSM: B5/B8/B3/B2=850/900/1800/1900MHz, 3G WCDMA: B1/B2/B5=2100/1900/850MHZ; 4G TDD-LTE: B34/B39/40/B41=2100/1900/2300/2500MHZ; 4G FDD LTE: B1/B2/aB3/2100/1900/1800/850/900MHZ

**Expandable Memory** TF Card

NOTE: specifications subject to change without notice.

# AG101-A-WX-4-2-IP54-V1



The AG101-A-WX-4-2-IP54-V1 is a 10.1” semi rugged tablet with IP54 rating. This tablet has an Android 6.0 operating system, a quad core processor, and a TF card for expandable memory.

**Customization Options:**

- Software: preloaded apps, custom settings, part number change, custom logo
- Hardware: custom plastic color, rubber case



<b>CPU</b>	Mediatek MT8163 Quad-core 1.3GHz	<b>Battery</b>	Lithium7500mAh
<b>Operating System</b>	Android 6.0	<b>Wifi</b>	802.11b/g/n/ac wireless (2.4G/5G Dual-band wifi)
<b>Rugged Durability</b>	IP54 rating	<b>GPS</b>	Yes
<b>Display &amp; Touch</b>	10.1 inch TFT-LCD Capacitive Multi Touch 1280 x 800 resolution	<b>USB interface</b>	1 x Micro USB , 1 x USB Type C
<b>Cameras</b>	Front 2.0MP, Rear 8.0MP	<b>Product Dimensions</b>	262mm x 172mm x 10.5mm
<b>Memory &amp; Storage</b>	2 GB RAM + 32 GB Internal storage	<b>Headphone Jack</b>	3.5mm Audio out
<b>HDMI Port</b>	1 x Micro HDMI port	<b>Expandable Memory</b>	TF card

NOTE: specifications subject to change without notice.

# AG080-A-WX-4-4-IP67-V1



AG080-A-WX-4-4-IP67-V1 is an 8.0" rugged tablet with Android 5.1 operating system, a Quad-Core Intel Cherry Trail Z8350 CPU, and WXGA 1280 x 800 resolution. AG080-A-WX-4-4-IP67-V1 features an IP67 ingress protection rating, NFC compatibility, HDMI output, and a rechargeable Lithium battery.

**Customization Options:**

- Software: preloaded apps, custom settings, part number change, custom logo
- Hardware: custom plastic color, rubber case



<b>CPU</b>	Intel Cherry Trail Z8350 Quad Core	<b>Battery</b>	Lithium7800mAh
<b>Operating System</b>	Android 5.1	<b>Wifi</b>	802.11b/g/n/ac wireless (2.4G/5G Dual-band wifi)
<b>Rugged Durability</b>	IP67 waterproof rating	<b>GPS</b>	U-blox NEO 7
<b>Display &amp; Touch</b>	8 inch TFT-LCD Capactive Multi-touch 1280 x 800 resolution	<b>USB interface</b>	1 x Micro USB, 1 x USB 2.0 Host
<b>Cameras</b>	2.0 MP Front / 5.0 MP Rear	<b>Sensors</b>	Optional: 1D or 2D barcode scanner,
<b>Memory &amp; Storage</b>	4GB DDR RAM + 64GB Internal storage	<b>Network</b>	3G and 4G Network:Standard is 3G WCDMA 900/2100MHz,4G Frequency:FDD LTE Bands:B1/B3/B5/B7/B8/B20; TDD LTE Bands: B38/B39/B40/B41
<b>NFC Function</b>	13.56Mhz	<b>Expandable Memory</b>	TF Card

NOTE: specifications subject to change without notice.

# AG080-W-WX-4-4-IP67-V1



The AG080-W-WX-4-4-IP67-V1 is an 8" rugged tablet with IP67 rating. This tablet has a Windows 10 Home operating system, a quad core processor, and a TF card for expandable memory.

**Customization Options:**

- Software: preloaded apps, custom settings, part number change, custom logo
- Hardware: custom plastic color, rubber case



<b>CPU</b>	Intel Cherry Trail Z8350 Quad Core	<b>Wifi</b>	802.11b/g/n/ac wireless (2.4G/5G Dual-band wifi)
<b>Operating System</b>	Windows 10 Home	<b>GPS</b>	U-blox NEO 7
<b>Rugged Durability</b>	IP67 waterproof rating	<b>USB interface</b>	2 x Micro USB, 1 x USB 2.0 Host
<b>Display &amp; Touch</b>	8 inch TFT-LCD Capacitive Multi-touch 1280 x 800 resolution	<b>Sensors</b>	Optional: 1D or 2D barcode scanner,
<b>Cameras</b>	2.0 MP Front / 5.0 MP Rear	<b>Network</b>	3G and 4G Network:Standard is 3G WCDMA 900/2100MHz,4G Frequency:FDD LTE Bands:B1/B3/B5/B7/B8/B20; TDD LTE Bands: B38/B39/B40/B41
<b>Memory &amp; Storage</b>	4GB DDR RAM + 64GB Internal storage	<b>Expandable Memory</b>	TF Card
<b>NFC Function</b>	13.56Mhz		
<b>Battery</b>	Lithium7800mAh		

NOTE: specifications subject to change without notice.

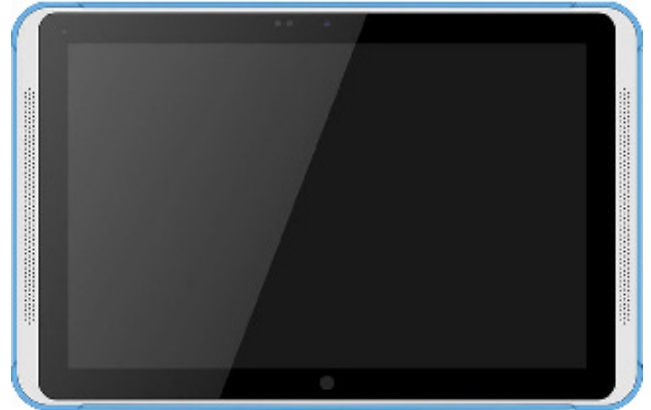
# AG101-A-H-10-4-IP54-V1



AG101-A-H-10-4-IP54-V1 is a 10.1" semi-rugged tablet with Android 7.1 operating system, a Deca-Core MediaTek MT6797 CPU, and WUXGA 1920 x 1200 resolution. AG101-A-H-10-4-IP54-V1 features an IP54 ingress protection rating, Bluetooth 4.1 connectivity, and a rechargeable Lithium battery.

**Customization Options:**

- Software: preloaded apps, custom settings, part number change, custom logo
- Hardware: custom plastic color, rubber case



<b>CPU</b>	MediaTek MT6797 Helio X20 Deca (10)-core Cortex-A72 2.1GHz
<b>Operating System</b>	Android 7.1
<b>Rugged Durability</b>	IP54 rating
<b>Display &amp; Touch</b>	10.1 inch TFT-LCD Capacitive 1920 x 1200 resolution
<b>Cameras</b>	Front 3.0MP, Rear 12.0MP
<b>Memory &amp; Storage</b>	4GB RAM + 32 GB Internal storage
<b>Headphone Jack</b>	3.5mm Audio Out

<b>Battery</b>	Lithium7500mAH
<b>Wifi</b>	802.11 a/b/g/n 2.4G+5Ghz dual-band
<b>GPS</b>	GPS / Beidou
<b>USB interface</b>	1 x Micro USB , 1 x USB Type C
<b>Product Dimensions</b>	242mm x 167mm x 10mm
<b>Network</b>	4G Networks: Support GSM: B5/B8/ B3/B2=850/900/1800/1900Mhz, 3G WCDMA B1=2100Mhz;TSD- WCDMA:B34/B39; TDD-LTE: B38/B39/ B40/1=2600/1900/2300/2500MHZ; FDD LTE: B1/B3/ B7=2100/1800/2600MHZ."
<b>Expandable Memory</b>	TF Card

NOTE: specifications subject to change without notice.

# AG080-A-WX-8-2-IP68-V1



AG080-A-WX-8-2-IP68-V1 is an 8.0" rugged tablet with Android 7.1 operating system, an Octa-Core Qualcomm MSM8953 CPU, and WXGA 1280 x 800 resolution. AG080-A-WX-8-2-IP68-V1 features an IP68 ingress protection rating, Bluetooth 4.2 connectivity, NFC compatibility, and a rechargeable Lithium battery.

**Customization Options:**

- Software: preloaded apps, custom settings, part number change, custom logo
- Hardware: custom plastic color, rubber case



<b>CPU</b>	Qualcomm MSM8953 Octa-core 1.8-2.0GHz
<b>Operating System</b>	Android 7.1
<b>Rugged Durability</b>	IP68 waterproof rating
<b>Display &amp; Touch</b>	8 inch TFT-LCD Capacitive Multi-touch 1280 x 800 resolution
<b>Cameras</b>	5.0 MP Front / 13.0 MP Rear
<b>Memory &amp; Storage</b>	2 GB RAM + 16GB Internal storage
<b>NFC Function</b>	13.56Mhz (Optional)
<b>Battery</b>	Lithium3.7V/8500mAh

<b>Wifi</b>	802.11 a/b/g/n wireless
<b>GPS</b>	GPS / Glonass / Beidou
<b>USB interface</b>	Micro USB
<b>Sensors</b>	"Standard: G-sensor,Gyro-sensor,Compass-sensor; Optional: 2D barcode scanner, NFC, UHF RFID, Fingerprint scanner"
<b>Network</b>	4G Support GSM: B5/B8/B3/B2 = 850/900/1800/1900Mhz, 3G WCDMA:2100MHZ;3G EVDO 800MHZ;TDS-CDMA: B34/B39 = 2010-2025/1880-1920Mhz; TDD-LTE: B39/B40/B41 = 1900/2300/2500MHZ; FDD LTE: B1/B3 = 2100/1800MHZ
<b>Expandable Memory</b>	None

NOTE: specifications subject to change without notice.

# AG080-A-WX-8-2-IP68-V2



The AG080-A-WX-8-2-IP68-V2 is an 8" rugged tablet with IP68 rating. This tablet has an Android 8.1 operating system, an octa core processor, and 32 GB of internal memory.

**Customization Options:**

- Software: preloaded apps, custom settings, part number change, custom logo
- Hardware: custom plastic color, rubber case



<b>CPU</b>	MediaTek MTK6753 Octa-core 1.5GHz	<b>Battery</b>	Lithium 3.7V/ 10000mAh
<b>Operating System</b>	Android 8.1	<b>Wifi</b>	802.11 a/b/g/n 2.4G+5Ghz dual-band wifi
<b>Rugged Durability</b>	IP68 waterproof rating	<b>GPS</b>	GPS / Glonass
<b>Display &amp; Touch</b>	8 inch TFT-LCD Capacitive Multi-touch 1280 x 800 resolution	<b>Product Dimensions</b>	243 mm x 158 mm x 23 mm
<b>Cameras</b>	Front 2.0MP, Rear 8.0MP	<b>Headphone Jack</b>	3.5 mm
<b>Memory &amp; Storage</b>	2 GB RAM + 32 GB Internal storage	<b>Network</b>	4G Networks: support 2G GSM: B5/B8/B3=850/900/1800Mhz, 3G WCDMA: B1/B2/B5/ B8=2100/1900/850/900MHZ 4G TDD LTE: B38/B39/B40/ B41=2600/1900/2300/2500MHZ 4G FDD_LTE B1/B2/B3/B4/B5/B7/B8/B20=2100/1900/1800/1700/850/2600 /800MHZ
<b>NFC Function</b>	Frequency is 13.56Mhz, is optional	<b>Expandable Memory</b>	None

NOTE: specifications subject to change without notice.



# AG070-A-WX-8-2-IP68-V1



The AG070-A-WX-8-2-IP68-V1 is a 7" rugged tablet with IP68 rating. This tablet has an Android 8.1 operating system, a quad core processor, and micro SD card up to 128 GB for expandable memory.

**Customization Options:**

- Software: preloaded apps, custom settings, part number change, custom logo
- Hardware: custom plastic color, rubber case



<b>CPU</b>	MediaTek MTK6762 Octa-core, 2.0GHz
<b>Operating System</b>	Android 8.1
<b>Rugged Durability</b>	IP68 waterproof rating
<b>Display &amp; Touch</b>	7 inch TFT-LCD 5- Point Capacitive Multi-touch 1280 x 800 resolution
<b>Cameras</b>	Front: 2.0M, Rear: 13.0MP
<b>Memory &amp; Storage</b>	2 GB RAM + 16GB Internal storage
<b>NFC Function</b>	13.56Mhz

<b>Battery</b>	Lithium9000mAh
<b>Wifi</b>	802.11 a/b/g/n
<b>GPS</b>	GPS, AGPS
<b>USB interface</b>	5-Pin Micro USB
<b>Sensors</b>	G sensor, light sensor, gyroscope, compass
<b>Expandable Memory</b>	Micro SD Max 128 GB

NOTE: specifications subject to change without notice.

# AG070-A-H-4-3-IP65-V1



The AG070-A-H-4-3-IP65-V1 is a 7" rugged tablet with IP65 rating. This tablet has an Android 5.1 operating system, a quad core processor, and TF card up to 64 GB for expandable memory.

**Customization Options:**

- Software: preloaded apps, custom settings, part number change, custom logo
- Hardware: custom plastic color, rubber case



<b>CPU</b>	MediaTek MTK6735V Quad-core,Cortex-A53 1.5GHz
<b>Operating System</b>	Android 5.1
<b>Rugged Durability</b>	IP65 waterproof rating
<b>Display &amp; Touch</b>	7 inch IPS Capacitive Multi-touch 1280 x 720 resolution
<b>Cameras</b>	Front 5.0M camera, Back 13.0M
<b>Memory &amp; Storage</b>	3GB RAM + 32 GB Internal storage
<b>NFC Function</b>	Frequency is 13.56Mhz; support ISO14443A/B/ISO15693,is optional;

<b>Battery</b>	Lithium10000mAh
<b>Wifi</b>	802.11a/b/g/n
<b>GPS</b>	GPS, Glonass is Optional
<b>USB interface</b>	USB type C
<b>Sensors</b>	NFC, Barcode, RFID, Fingerprint
<b>Product Dimensions</b>	237 mm x 137 mm x 29 mm
<b>Expandable Memory</b>	TF Card up to 64 GB

NOTE: specifications subject to change without notice.

# AG101-A-SX-4-2-IP65-V4



The AG101-A-SX-4-2-IP65-V4 is a 10.1" rugged tablet with IP65 rating. This tablet has an Android 4.4 operating system, a quad core processor, and TF card for expandable memory.

**Customization Options:**

- Software: preloaded apps, custom settings, part number change, custom logo
- Hardware: custom plastic color, rubber case



<b>CPU</b>	Intel Atom Bay-Trail Z3735F Quad-core 1.33-1.8GHz
<b>Operating System</b>	Android 4.4
<b>Rugged Durability</b>	IP65 waterproof rating
<b>Display &amp; Touch</b>	10.1 inch IPS 1280 x 800 resolution
<b>Cameras</b>	2MP/5MP
<b>Memory &amp; Storage</b>	2 GB RAM + 32 GB Internal storage
<b>NFC Function</b>	YES- 13.56MHz Support ISO/IEC 14443A/14443B/15693/18092/mifare, readable distance: about 4cm; optional

<b>Battery</b>	Lithium 3.7V/10000mAh
<b>Wifi</b>	802.11 a/b/g/n (2.4G/5G Dual-band)
<b>GPS</b>	U-blox NEO-7
<b>USB interface</b>	Yes, micro USB 5pin; USB 2.0 Host
<b>Headphone Jack</b>	3.5mm
<b>Network</b>	Standard is 3G WCDMA 900/2100MHz, 4G LTE is optional, 4G Frequency: FDD LTE Bands:B1/B3/B5/B7/B8/B20; TDD LTE Bands: B38/B39/B40/B41.
<b>Expandable Memory</b>	TF card

NOTE: specifications subject to change without notice.

# AG101-A-SX-4-2-IP65-V3



The AG101-A-SX-4-2-IP65-V3 is a 10.1" rugged tablet with IP65 rating and MIL-STD-810G certification. This tablet has an Android 5.1 operating system, a quad core processor, and TF card for expandable memory.

**Customization Options:**

- Software: preloaded apps, custom settings, part number change, custom logo
- Hardware: custom plastic color, rubber case



<b>CPU</b>	Intel Atom Cherry-Trail Z8350 Quad-core 1.44Ghz, Turbo 1.92GHz
<b>Operating System</b>	Android 5.1
<b>Rugged Durability</b>	Waterproof and dustproof rate: IP65; MIL-STD-810G rating
<b>Display &amp; Touch</b>	10.1 inch IPS 1280 x 800 resolution
<b>Cameras</b>	Front 2MP/Back 5MP
<b>Memory &amp; Storage</b>	2 GB RAM
<b>NFC Function</b>	13.56Mhz, optional

<b>Battery</b>	Lithium 3.7V/10000mAh
<b>Wifi</b>	802.11 b/g/n/ac wireless 2.4G/5G Dual-band wifi
<b>GPS</b>	U-blox NEO-7
<b>USB interface</b>	1*RJ45 100M/1000M Ethernet Port,1*DB9 RS232 Serial port, 1*Micro USB,1*USB2.0 Host,1*DC port 1*TF Card Slot, 1*HDMI 1.4a Port, 1*ear-phone jack, 1*Sim Card Slot,
<b>Network</b>	Network: Standard is 3G WCDMA 900/2100MHz, 4G LTE is optional, 4G Frequency: FDD LTE Bands:B1/B3/B5/B7/B8/B20; TDD LTE Bands: B38/B39/B40/B41
<b>Expandable Memory</b>	TF card

NOTE: specifications subject to change without notice.

# AG101-W-SX-4-2-IP65-V1



The AG101-W-SX-4-2-IP65-V1 is a 10.1" rugged tablet with IP65 rating and MIL-STD-810G certification. This tablet has a Windows 10 Home operating system, a quad core processor, and TF card for expandable memory.

**Customization Options:**

- Software: preloaded apps, custom settings, part number change, custom logo
- Hardware: custom plastic color, rubber case



<b>CPU</b>	Intel Atom Bay-Trail Z3735F Quad-core 1.33-1.8GHz
<b>Operating System</b>	Windows 10 Home
<b>Rugged Durability</b>	Waterproof and dustproof rate: IP65; MIL-STD-810G rating
<b>Display &amp; Touch</b>	10.1 inch IPS 1280 x 800 resolution
<b>Cameras</b>	Front 2MP/Back 5MP
<b>Memory &amp; Storage</b>	32 GB internal storage + 2 GB RAM
<b>NFC Function</b>	13.56MHz Support ISO/IEC 14443A/14443B/15693/18092/mifare, readable distance: about 4cm, optional

<b>Battery</b>	Lithium 3.7V/10000mAh
<b>Wifi</b>	802.11 a/b/g/n (2.4G/5G Dual-band)
<b>GPS</b>	U-blox NEO-7
<b>USB interface</b>	Yes, micro USB 5pin; USB 2.0 Host
<b>Network</b>	Standard is 3G WCDMA 900/2100MHz, 4G LTE is optional, 4G Frequency: FDD LTE Bands:B1/B3/B5/B7/B8/B20; TDD LTE Bands: B38/B39/B40/B41
<b>Expandable Memory</b>	TF card

NOTE: specifications subject to change without notice.

# AG101-W-SX-4-2-IP65-V2



AG101-W-SX-4-2-IP65-V2 is a 10.1" rugged tablet with Windows 10 operating system, a Quad-Core Intel Atom Cherry-Trail Z8350 CPU, and WXGA 1280 x 800 resolution. AG101-W-SX-4-2-IP65-V2 features an IP65 ingress protection rating, RJ45 ethernet connection, HDMI output, and a rechargeable Lithium battery.

**Customization Options:**

- Software: preloaded apps, custom settings, part number change, custom logo
- Hardware: custom plastic color, rubber case



<b>CPU</b>	Intel Atom Cherry-Trail Z8350 Quad-core 1.44Ghz, Turbo 1.92GHz
<b>Operating System</b>	Windows 10 Home
<b>Rugged Durability</b>	Waterproof and dustproof rate: IP65; MIL-STD-810G rating
<b>Display &amp; Touch</b>	10.1 inch IPS 1280 x 800 resolution
<b>Cameras</b>	Front 2MP/Back 5MP
<b>Memory &amp; Storage</b>	32 GB EMMC internal storage + 2 GB RAM
<b>NFC Function</b>	13.56Mhz, optional

<b>Battery</b>	Lithium 3.7V/10000mAh
<b>Wifi</b>	802.11 b/g/n/ac wireless 2.4G/5G Dual-band wifi
<b>GPS</b>	U-blox NEO-7
<b>USB interface</b>	1*RJ45 100M/1000M Ethernet Port,1*DB9 RS232 Serial port, 1*Micro USB,1*USB2.0 Host,1*DC port 1*TF Card Slot, 1*HDMI 1.4a Port, 1*ear-phone jack, 1*Sim Card Slot,
<b>Network</b>	Network: Standard is 3G WCDMA 900/2100MHz, 4G LTE is optional, 4G Frequency: FDD LTE Bands:B1/B3/B5/B7/B8/B20; TDD LTE Bands: B38/B39/B40/B41
<b>Expandable Memory</b>	TF card

NOTE: specifications subject to change without notice.

# AG101-L-WX-4-2-IP65-V1



AG101-L-WX-4-2-IP65-V1 is a 10.1" rugged tablet with Linux V16.4 operating system, a Quad-Core Intel Celeron Processor N2930 CPU, and WXGA 1280 x 800 resolution. AG101-L-WX-4-2-IP65-V1 features an IP65 ingress protection rating, micro HDMI output, and a rechargeable Lithium battery.

**Customization Options:**

- Software: preloaded apps, custom settings, part number change, custom logo
- Hardware: custom plastic color, rubber case



<b>CPU</b>	Intel Celeron Processor N2930 Quad-core 2.16GHz	<b>Battery</b>	Rechargeable Lithium Battery 3.7V/8000mAh
<b>Operating System</b>	Linux Ubuntu V16.4	<b>Wifi</b>	802.11 b/g/n
<b>Rugged Durability</b>	Waterproof and dustproof rate: IP65; MIL-STD-810G rating	<b>GPS</b>	Optional
<b>Display &amp; Touch</b>	10.1 inch IPS 1280 x 800; 1920 x 1200 optional resolution	<b>USB interface</b>	2 x USB 3.1
<b>Cameras</b>		<b>Sensors</b>	UHF RFID: is optional
<b>Memory &amp; Storage</b>	32G EMMC / 64GB or 128G EMMC is optional internal storage + 2/4 GB (optional) RAM	<b>Network</b>	3G & 4G optional
<b>NFC Function</b>	No	<b>Expandable Memory</b>	None

NOTE: specifications subject to change without notice.

# AG101-L-WX-4-2-IP65-V2



The AG101-L-WX-4-2-IP65-V2 is a 10.1” rugged tablet with IP65 rating and MIL-STD-810G certification. This tablet has a Linux V16.6 operating system and a quad core processor, 2/4 GB options for RAM and flexible memory options.

**Customization Options:**

- Software: preloaded apps, custom settings, part number change, custom logo
- Hardware: custom plastic color, rubber case



<b>CPU</b>	Intel Celeron Processor N2930 Quad-core 2.16GHz	<b>Battery</b>	Rechargeable Lithium Battery 3.7V/8000mAh
<b>Operating System</b>	Linux V16.6	<b>Wifi</b>	802.11 b/g/n
<b>Rugged Durability</b>	Waterproof and dustproof rate: IP65; MIL-STD-810G rating	<b>GPS</b>	Optional
<b>Display &amp; Touch</b>	10.1 inch IPS 1280 x 800; 1920 x 1200 optional resolution	<b>USB interface</b>	2 x USB 3.1
<b>HDMI Port</b>	Micro HDMI	<b>Sensors</b>	UHF RFID: is optional
<b>Memory &amp; Storage</b>	32G EMMC / 64GB or 128G EMMC is optional internal storage + 2/4 GB (optional) RAM	<b>Network</b>	3G & 4G optional
<b>NFC Function</b>	No	<b>Expandable Memory</b>	None

NOTE: specifications subject to change without notice.



# AG101-W-WX-4-2-IP65-V1



The AG101-W-WX-4-2-IP65-V1 is a 10.1” rugged tablet with IP65 rating and MIL-STD-810G certification. This tablet has a Windows 7 operating system and a quad core processor, 2/4 GB options for RAM and flexible memory options.

**Customization Options:**

- Software: preloaded apps, custom settings, part number change, custom logo
- Hardware: custom plastic color, rubber case



<b>CPU</b>	Intel Celeron Processor N2930 Quad-core 2.16GHz
<b>Operating System</b>	Windows 7
<b>Rugged Durability</b>	Waterproof and dustproof rate: IP65; MIL-STD-810G rating
<b>Display &amp; Touch</b>	10.1 inch IPS 1280 x 800; 1920 x 1200 optional resolution
<b>HDMI Port</b>	Micro HDMI
<b>Memory &amp; Storage</b>	32G EMMC / 64GB or 128G EMMC is optional internal storage + 2/4 GB (optional) RAM
<b>NFC Function</b>	No

<b>Battery</b>	Rechargeable Lithium Battery 3.7V/8000mAh
<b>Wifi</b>	802.11 b/g/n
<b>GPS</b>	Optional
<b>USB interface</b>	2 x USB 3.1
<b>Sensors</b>	UHF RFID: is optional
<b>Network</b>	3G & 4G optional
<b>Expandable Memory</b>	None

NOTE: specifications subject to change without notice.

# AG101-W-WX-4-2-IP65-V2



The AG070-A-WX-4-2-IP67-VB is a 10.1" rugged tablet with IP65 rating and MIL-STD-810G certification. This tablet has a Windows 10 operating system and a quad core processor, 3/4 GB options for RAM and flexible memory options.

**Customization Options:**

- Software: preloaded apps, custom settings, part number change, custom logo
- Hardware: custom plastic color, rubber case



<b>CPU</b>	Intel Celeron Processor N2930 Quad-core 2.16GHz	<b>Battery</b>	Rechargeable Lithium Battery 3.7V/8000mAh
<b>Operating System</b>	Windows 10	<b>Wifi</b>	802.11 b/g/n
<b>Rugged Durability</b>	Waterproof and dustproof rate: IP65; MIL-STD-810G rating	<b>GPS</b>	Optional
<b>Display &amp; Touch</b>	10.1 inch IPS 1280 x 800; 1920 x 1200 optional resolution	<b>USB interface</b>	2 x USB 3.1
<b>HDMI Port</b>	Micro HDMI	<b>Sensors</b>	UHF RFID: is optional
<b>Memory &amp; Storage</b>	32G EMMC / 64GB or 128G EMMC is optional internal storage + 3/4 GB (optional) RAM	<b>Network</b>	3G & 4G optional
<b>NFC Function</b>	No	<b>Expandable Memory</b>	None

NOTE: specifications subject to change without notice.

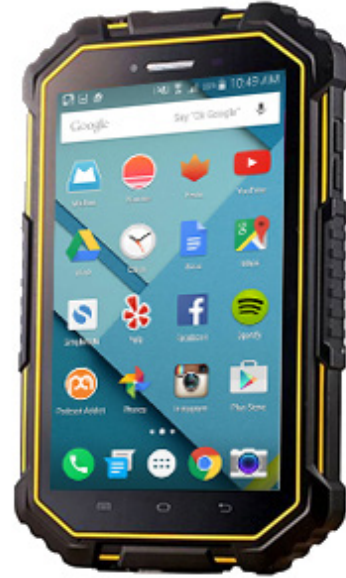
# AG070-A-WX-4-2-IP67-VB



The AG070-A-WX-4-2-IP67-VB is a 7" rugged tablet with IP67 rating and MIL-STD-810G certification. This tablet has an Android 6.0 operating system and a quad core processor, 2 GB of RAM, 16 GB of internal memory, expandable memory up to 32 GB with micro card.

**Customization Options:**

- Software: preloaded apps, custom settings, part number change, custom logo
- Hardware: custom plastic color, rubber case



<b>CPU</b>	MediaTek MTK6735 Quad-core, Cortex-A7 1.3GHz	<b>Battery</b>	Lithium 7000 mAh
<b>Operating System</b>	Android 6.0	<b>Wifi</b>	Yes IEEE 802.11 b/g/n
<b>Rugged Durability</b>	IP67 Waterproof and dust-proof; MIL-STD-810G rating	<b>GPS</b>	GPS + Glonass or GPS +Beidou is Optional
<b>Display &amp; Touch</b>	7 inch Multi Touch Capacitive IPS HD screen 1280 x 800 resolution	<b>USB interface</b>	1, 5-pin micro USB OTG
<b>Cameras</b>	Front 2.0MP/Back 8MP (software for rear camera is 13MP)	<b>Sensors</b>	"G-sensor, Light-sensor, Gyroscope, Compass
<b>Memory &amp; Storage</b>	16GB internal storage + 2 GB RAM	<b>Network</b>	"3G WCDMA: B1/B3/B8=2100/1800/900MHZ; 4G TDD-LTE: B38/B39/B40/B41=2600/1900/2300/2500MHZ; 4G FDD LTE: B1/B3/B7/B8/B20=2100/1800/2600/900/800MHZ. American Version (optional): 4G FDD: B1/B4/B5/B7/B17=2100/1700/850/2600/700MHZ, support Quad-Band GSM and 3G WCDMA: B1/B2/B5=2100/1900/850MHZ "
<b>NFC Function</b>	Frequency is 13.56Mhz	<b>Expandable Memory</b>	Micro card slot support max 32 GB

NOTE: specifications subject to change without notice.

# AG070-A-HD-4-3-IP67-V1



The AG070-A-HD-4-3-IP67-V1 is a 7" rugged tablet with IP67 rating. This tablet has an Android 5.1 operating system and a quad core processor, 3 GB of RAM, 32 GB of internal memory, expandable memory up to 64 GB with microSD.

**Customization Options:**

- Software: preloaded apps, custom settings, part number change, custom logo
- Hardware: custom plastic color, rubber case



<b>CPU</b>	MediaTek MTK6735 Quad-core, Cortex-A53 1.5GHz
<b>Operating System</b>	Android 5.1
<b>Rugged Durability</b>	IP67 Waterproof and dust-proof
<b>Display &amp; Touch</b>	7 inch Capacitive Multi Touch IPS 1280 x 720 resolution
<b>Cameras</b>	Front 5MP/Back 13MP
<b>Memory &amp; Storage</b>	32 GB internal storage + 3 GB RAM

<b>NFC Function</b>	Frequency is 13.56Mhz, Support ISO14443A/B/ISO15693, Optional- UHF RFID: 865MHZ-915MHZ, readable distance is about 1.5-2.0 Meters, optional
<b>Battery</b>	Built-in 9650mAh Lithium Battery 9650mAh
<b>Wifi</b>	802.11 b/g/n/ac (2.4G/5G Dual band)
<b>GPS</b>	Glonass Optional
<b>USB interface</b>	1*5-pin micro USB (OTG)
<b>Expandable Memory</b>	microSD, Support up to 64GB

NOTE: specifications subject to change without notice.

# AG080-A-WX-10-4-IP68-V1



The AG080-A-WX-10-4-IP68-V1 is an 8" rugged tablet with IP68 rating and MIL-STD-810G certification. This tablet has an Android 8.1 operating system and a deca core processor, 4 GB of RAM, 64 GB of internal memory.

**Customization Options:**

- Software: preloaded apps, custom settings, part number change, custom logo
- Hardware: custom plastic color, rubber case



<b>CPU</b>	MTK6797 Deca(10)-core 2.3GHZ
<b>Operating System</b>	Android 8.1
<b>Rugged Durability</b>	IP68 Waterproof and dust-proof; MIL-STD-810G rating
<b>Display &amp; Touch</b>	8 inch Capacitive Multi Touch IPS with G+F+F Corning Gorilla 3rd gen glass. 1280 x 800 pixels
<b>Cameras</b>	Front 2MP/Back 8MP
<b>Memory &amp; Storage</b>	64 GB internal storage + 4 GB RAM
<b>NFC Function</b>	13.56Mhz, optional

<b>Battery</b>	Built in 3.7V Lithium 10000mAh
<b>Wifi</b>	IEEE 802.11 a/b/g/n 2.4G+5Ghz dual-band WIFI
<b>GPS</b>	GPS/Glonass/Beidou
<b>USB interface</b>	1 x 5-Pin Micro USB
<b>Sensors</b>	G/Orientation sensor, Proximity sensor, Light sensor, Acceleration sensor, Magnetic field sensor, Geomagnetic Rotation sensor
<b>External Storage</b>	Support max 128GB Micro-SD card
<b>Product Dimensions</b>	243.2 mm x 158mm x 23mm

NOTE: specifications subject to change without notice.

# AG080-A-F-8-3-IP68-V2



The AG080-A-F-8-3-IP68-V2 is an 8" rugged tablet with IP68 rating and MIL-STD-810G certification. This tablet has an Android 7.1 operating system and an octa core processor, 3 GB of RAM, 32 GB of internal memory.

**Customization Options:**

- Software: preloaded apps, custom settings, part number change, custom logo
- Hardware: custom plastic color, rubber case



<b>CPU</b>	Qualcomm MSM8937 Octa-core 1.5GHz Support 4G FDD and TDD	<b>Battery</b>	Built in 3.7V Lithium 8500mAh
<b>Operating System</b>	Android 7.1	<b>Wifi</b>	802.11 b/g/n
<b>Rugged Durability</b>	IP68 Waterproof and dust-proof; MIL-STD-810G rating	<b>GPS</b>	GPS/Glonass/Beidou
<b>Display &amp; Touch</b>	8 inch Capacitive Multi Touch IPS 1280 x 800 Pixels, FHD 1920 x 1080pxs is optional resolution	<b>USB interface</b>	1*MICRO USB
<b>Cameras</b>	Front 2MP/Back 13MP	<b>Sensors</b>	UHF RFID: readable distance is about 7.0 Meters,Optional; ID card reader module: Optional; 2D Barcode scanner module: Optional; Built-in fingerprint scanner: capacitive fingerprint scanner 508DPI, Optional
<b>Memory &amp; Storage</b>	32 GB internal storage + 3 GB RAM	<b>Expandable Memory</b>	None
<b>NFC Function</b>	13.56Mhz, optional		

NOTE: specifications subject to change without notice.

# AG080-W-WX-4-2-IP67-V1



The AG080-W-WX-4-2-IP67-V1 is an 8" rugged tablet with IP67 rating and MIL-STD-810G certification. This tablet has a Windows 10 Home operating system and a quad core processor, 2 GB of RAM, 32 GB of internal memory and TF card for expandable memory.

**Customization Options:**

- Software: preloaded apps, custom settings, part number change, custom logo
- Hardware: custom plastic color, rubber case



<b>CPU</b>	Intel Bay-Tray Z3735F Quad-core Turbo	<b>Battery</b>	Lithium 8500mAh
<b>Operating System</b>	Windows 10 Home	<b>Wifi</b>	802.11 b/g/n/ac 2.4G/5G Dual-band wifi
<b>Rugged Durability</b>	IP67 Waterproof and dust-proof; MIL-STD-810G rating	<b>GPS</b>	U-blox NEO 7
<b>Display &amp; Touch</b>	8 inch Capacitive Multi-touch TFT-LCD 1280 x 800 resolution	<b>USB interface</b>	1 x Micro USB, 1 x USB 2.0 Host
<b>Cameras</b>	Front 2MP/Back 5MP	<b>Sensors</b>	Optional: 1D or 2D barcode scanner, NFC
<b>Memory &amp; Storage</b>	32 GB internal storage + 2 GB RAM	<b>Network</b>	3G WCDMA 900/2100MHz, 4G
<b>NFC Function</b>	NXP NFC 13.56MHz, optional	<b>Expandable Memory</b>	TF card

NOTE: specifications subject to change without notice.

# AG070-A-WX-4-1-IPNA-V1



AG070-A-WX-4-1-IPNA-V1 is a 7.0" tablet with Android 6.0.1 operating system, a Quad-Core Rockchip 3128 CPU, and WXGA 1280 x 800 resolution. AG070-A-WX-4-1-IPNA-V1 features rear VESA mounting, RJ45 POE, and wired DC power input.

**Customization Options:**

- Software: preloaded apps, custom settings, part number change, custom logo
- Hardware: most hardware customizations are available



<b>CPU</b>	Quad core Rockchip 3128 1.6GH
<b>Operating System</b>	Android 6.0.1
<b>Rugged Durability</b>	No IP rating
<b>Display &amp; Touch</b>	7 inch 10-Point capacitive touch IPS 1280 x 800 resolu- tion
<b>Cameras</b>	Front 2MP
<b>Memory &amp; Storage</b>	8 GB internal storage + 1 GB RAM
<b>NFC Function</b>	No

<b>Battery</b>	None, 12V DC input
<b>Wifi</b>	802.11 b/g/n
<b>Audio Codec</b>	MP3 / WMA / WAV / AAC / FLAC / OGG
<b>Video Codec</b>	MOV 1080P/AVI/WMV/RM/ RMVB/3GP/MKV/MP4 /ASF/ VOB
<b>Product Dimensions</b>	215mm x 126mm x 26mm
<b>Network</b>	1 x RJ45 (supports POE)
<b>Expandable Memory</b>	SD Card

NOTE: specifications subject to change without notice.



# AG080-A-WX-4-1-IPNA-V1



The AG080-A-WX-4-1-IPNA-V1 is an 8" tablet featuring a capacitive multi touch TFT screen, Android operating system and a quad core processor. The tablet has 1 GB of RAM, 8 GB of internal memory and TF card for expandable memory.

**Customization Options:**

- Software: preloaded apps, custom settings, part number change, custom logo
- Hardware: most hardware customizations are available



<b>CPU</b>	Spreadtrum SC9832E Cortex A53 MP4 quad-core, 1.4Ghz
<b>Operating System</b>	Android 8.1 Go
<b>Rugged Durability</b>	No IP rating
<b>Display &amp; Touch</b>	8 inch Multi-touch capacitive TFT-LCD 1280 x 800 resolution
<b>Cameras</b>	Front .3MP/Back 2MP
<b>Memory &amp; Storage</b>	8 GB internal storage + 1 GB RAM
<b>NFC Function</b>	No

<b>Battery</b>	3600mAH
<b>Audio Codec</b>	MP3/WMA/WAV/AAC/FLAC/OGG
<b>Video Codec</b>	MOV 1080P/AVI /WMV/RM/RMVB/3GP/MKV/MP4/AS/VOB
<b>USB interface</b>	Micro USB (x1), USB Host type A (x1)
<b>Headphone Jack</b>	3.5mm- Audio Out
<b>SIM Card Slot</b>	Yes
<b>Expandable Memory</b>	TF Card

NOTE: specifications subject to change without notice.

# AG101WX-A-4-1-IPNA-V1



The AG101WX-A-4-1-IPNA-V1 is a 10.1" tablet featuring a capacitive multi touch IPS screen, Android operating system and a quad core processor. The tablet has 1 GB of RAM, 8 GB of internal memory and SD/MMC card for expandable memory up to 32 GB.

**Customization Options:**

- Software: preloaded apps, custom settings, part number change, custom logo
- Hardware: most hardware customizations are available



<b>CPU</b>	A33 quad core processor, clocked 1.4Ghz
<b>Operating System</b>	Android 4.4.2
<b>Rugged Durability</b>	No IP rating
<b>Display &amp; Touch</b>	10.1 inch Capacitive Multi Touch IPS 1280 x 800 resolution
<b>Cameras</b>	Front 2MP
<b>Memory &amp; Storage</b>	8 GB internal storage + 1 GB RAM
<b>NFC Function</b>	No

<b>Battery</b>	External 12V/5A Power Adapter
<b>Wifi</b>	802.11 b/g/n
<b>USB interface</b>	USG OTG, USB 2.0 x 3
<b>Audio Codec</b>	MP3, MIDI, AMR, AAC, WAV
<b>Video Codec</b>	MPEG-1, MPEG-2, MPEG-4, H.263, H.264, VC1, RV, Support up to 1080p
<b>Network</b>	RJ45 ethernet, Support external 3G USB dongle
<b>Expandable Memory</b>	SD / MMC Card up to 32 GB

NOTE: specifications subject to change without notice.

# AG101-A-WX-4-2-IPNA-V3



The AG101-A-WX-4-2-IPNA-V3 is a 10.1” tablet featuring a capacitive touch IPS screen, Android 8.1 operating system and a quad core processor. The tablet has 2 GB of RAM, 16 GB of internal memory and SD card for expandable memory.

**Customization Options:**

- Software: preloaded apps, custom settings, part number change, custom logo
- Hardware: most hardware customizations are available



<b>CPU</b>	RK3288 Quad core cortex A9,1.8G
<b>Operating System</b>	Android 8.1
<b>Rugged Durability</b>	No IP rating
<b>Display &amp; Touch</b>	10.1 inch 10-Point capacitive touch IPS 1280 x 800 resolution
<b>Cameras</b>	Front 2MP
<b>Memory &amp; Storage</b>	16 GB internal storage + 2 GB DDR3 RAM
<b>NFC Function</b>	No

<b>Battery</b>	5000mah/3.7V
<b>Wifi</b>	802.11 a/b/g/n
<b>Headphone Jack</b>	3.5mm earphone
<b>USB interface</b>	Micro USB OTG, USB Host (x3)
<b>Product Dimensions</b>	3.5mm earphone
<b>Speaker</b>	1.5W (x2)
<b>Expandable Memory</b>	SD card

NOTE: specifications subject to change without notice.

# AG101-A-WX-4-1-IPNA-V1



The AG101-A-WX-4-1-IPNA-V1 is a 10.1” tablet featuring a capacitive touch TFT screen, Android operating system and a quad core processor. The tablet has 1 GB of RAM, 8 GB of internal memory and SD card for expandable memory.

**Customization Options:**

- Software: preloaded apps, custom settings, part number change, custom logo
- Hardware: most hardware customizations are available



<b>CPU</b>	RK3128,Quad-core Cortex-A53 up to 1.6GHz
<b>Operating System</b>	Android 6.0
<b>Rugged Durability</b>	No IP rating
<b>Display &amp; Touch</b>	10.1 inch 10-Point capacitive touch IPS 1280 x 800 resolution
<b>Cameras</b>	Front 2MP
<b>Memory &amp; Storage</b>	8 GB internal storage + 1 GB RAM
<b>NFC Function</b>	No

<b>USB interface</b>	USB Host, Mini USB OTG
<b>Wifi</b>	802.11 b/g/n
<b>Audio Codec</b>	"MP3/WMA/AAC etc.
<b>Video Codec</b>	MPEG-1,MPEG-2,MPEG-4,H.263,H.264,VC1,RV etc.,support up to 1080p
<b>SIM Card Slot</b>	Internal 3G /4G SIM data (OEM OPTION )
<b>Network</b>	Internal 3G /4G SIM data (OEM OPTION )
<b>Expandable Memory</b>	SD card

NOTE: specifications subject to change without notice.

# AG101-A-WX-4-1-IPNA-V2



AG101-A-WX-4-1-IPNA-V2 is a 10.1" tablet with Android 6.0 operating system, a Quad-Core Rockchip 3128 CPU, and WXGA 1280 x 800 resolution. AG101-A-WX-4-1-IPNA-V2 features rear VESA mounting, RJ45 POE, HDMI output, and a wired DC power input.

**Customization Options:**

- Software: preloaded apps, custom settings, part number change, custom logo
- Hardware: most hardware customizations are available



<b>CPU</b>	RK3128 Quad core cortex A9, 1.6GHz
<b>Operating System</b>	Android 6.0
<b>Rugged Durability</b>	No IP rating
<b>Display &amp; Touch</b>	10.1 inch 10-Point capacitive touch IPS 1280 x 800 resolution
<b>Cameras</b>	Front 2MP
<b>Memory &amp; Storage</b>	8 GB internal storage + 1 GB RAM
<b>NFC Function</b>	No

<b>Battery</b>	Optional- 5000mah/3.7V
<b>Wifi</b>	802.11 b/g/n
<b>Product Dimensions</b>	260mm x 180mm x 30mm
<b>USB interface</b>	Micro USB OTG, USB Host (x3)
<b>Headphone Jack</b>	3.5mm earphone
<b>HDMI Port</b>	HDMI Output
<b>Expandable Memory</b>	SD Card

NOTE: specifications subject to change without notice.

# AG121-A-WX-4-1-IPNA-V1



The AG121-A-WX-4-1-IPNA-V1 is a 12.1" tablet featuring a capacitive multi touch TFT screen, Android operating system and an octa-core processor. The tablet has 1 GB of RAM, HDMI output and SD card for expandable memory up to 32 GB.

**Customization Options:**

- Software: preloaded apps, custom settings, part number change, custom logo
- Hardware: most hardware customizations are available



<b>CPU</b>	A64 Quad-core Cortex-A53	<b>Battery</b>	None, 12V/2A DC Input
<b>Operating System</b>	Android 6.0.1	<b>Wifi</b>	802.11 b/g/n
<b>Rugged Durability</b>	No IP rating	<b>Product Dimensions</b>	310mm x 215mm x 25.5mm
<b>Display &amp; Touch</b>	12.1 inch Capacitive Multi Touch TFT-LCD 1280 x 800 resolution	<b>Audio Codec</b>	MP3/WMA/AAC etc
<b>Cameras</b>	Front 2MP (optional)	<b>Video Codec</b>	MPEG-1, MPEG-2, MPEG-4, H.263, H.264, VC1, RV etc., support up 1080P
<b>Memory &amp; Storage</b>	8 GB internal storage + 1 GB RAM	<b>Speaker</b>	2W (x2)
<b>NFC Function</b>	No	<b>Expandable Memory</b>	SD Card (Max. 32 GB)

NOTE: specifications subject to change without notice.

# AG156-A-F-4-1-IPNA-V1



The AG156-A-F-4-1-IPNA-V1 is a 15.6" tablet with an Android operating system. The quad-core processor features 1 GB of RAM with 8 GB of internal storage space.

**Customization Options:**

- Software: preloaded apps, custom settings, part number change, custom logo
- Hardware: most hardware customizations are available



<b>CPU</b>	Rockchip 3188 Quad Core 1.6GHz	<b>Battery</b>	5000mah/3.7V
<b>Operating System</b>	Android 4.4 (5.1- Optional)	<b>Wifi</b>	802.11 b/g/n
<b>Rugged Durability</b>	No IP rating	<b>USB interface</b>	Micro USB OTG, 3 x USB Host
<b>Display &amp; Touch</b>	15.6 inch 10-Point capacitive touch TFT LCD 1920 x 1080 resolution	<b>Audio Codec</b>	MP3 / WMA / WAV / AAC / FLAC / OGG
<b>Cameras</b>	Front 2MP	<b>Video Codec</b>	MOV 1080P/AVI/WMV/RM/ RMVB/3GP/MKV/MP4 /ASF/ VOB
<b>Memory &amp; Storage</b>	8 GB internal storage + 1 GB RAM	<b>Network</b>	1 x RJ45 (supports POE 802.3 AF/AT)
<b>NFC Function</b>	No	<b>Expandable Memory</b>	None

NOTE: specifications subject to change without notice.

# AG070-A-WS-8-2-IPNA-V1



The AG070-A-WS-8-2-IPNA-V1 is a 7 inch tablet with an Android operating system. The octa core processor features 2 GB of RAM with 8 GB of internal storage space.

**Customization Options:**

- Software: preloaded apps, custom settings, part number change, custom logo
- Hardware: most hardware customizations are available



<b>CPU</b>	RK3368 64 bit Octa-core Cortex-A53 up to 1.5GHz
<b>Operating System</b>	Android 6.0
<b>Rugged Durability</b>	No IP rating
<b>Display &amp; Touch</b>	7 inch Multi Points Capacitive Touch TFT-LCD 1024 x 600 resolution
<b>Cameras</b>	Front 0.3MP/Back 0.3MP
<b>Memory &amp; Storage</b>	8 GB internal storage + 2 GB RAM
<b>NFC Function</b>	No

<b>Battery</b>	Lithium 3000mAh- 5V/2A
<b>Wifi</b>	Built in 802.11 b/g/n
<b>GPS</b>	No GPS
<b>USB interface</b>	1 x USB Type A
<b>Headphone Jack</b>	3.5 mm audio out
<b>Expandable Memory</b>	TF card

NOTE: specifications subject to change without notice.



# AG080-A-WX-4-2-IPNA-V1



The AG080-A-WX-4-2-IPNA-V1 is an 8 inch tablet with an Android 8.1 operating system. The quad core processor features 2 GB of RAM with 16 GB of internal storage space.

### Customization Options:

- Software: preloaded apps, custom settings, part number change, custom logo
- Hardware: most hardware customizations are available



<b>CPU</b>	RK3288, Quad Core, Cortex A17 CPU	<b>Battery</b>	None, 12V DC Input
<b>Operating System</b>	Android 8.1	<b>Wifi</b>	802.11 b/g/n
<b>Rugged Durability</b>	No IP rating	<b>HDMI Port</b>	Yes
<b>Display &amp; Touch</b>	8 inch 5- Point Capacitive Multi-touch TFT-LCD 1280 x 800 resolution	<b>USB interface</b>	USB Host (x3), Micro USB OTG
<b>Cameras</b>	Front 2MP (optional)	<b>Product Dimensions</b>	212.20mm x 147.6mm x 31mm
<b>Memory &amp; Storage</b>	16GB internal storage + 2 GB RAM	<b>Headphone Jack</b>	3.5 mm
<b>NFC Function</b>	No	<b>Speaker</b>	2x 1.5 W

NOTE: specifications subject to change without notice.

THANK YOU

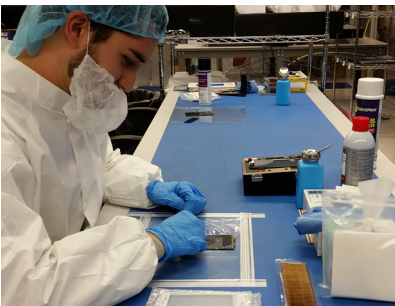
# Thank You

|||||

## COMMUNITY OF EXPERTS

Whether we are met with a new design or challenged with improving an existing design, AGDisplays supports your team by delivering unparalleled LCD expertise and technology. AGDisplays' partners benefit from our efficient design process and our dedication to creating quality design solutions.

We saw the need for off the shelf products, so we've added an expansive line of open/closed frame LCDs, digital signage, and all-in-one products. We offer unique LCD products like advanced touchscreen tabletops, high quality medical displays and rugged mobile devices. All of which can benefit from our value add integration services. Our products are used across many industries including Military, Avionics, Marine, Industrial, Medical, Transportation and many more.



## CERTIFICATIONS

AGDisplays values high-quality working and design standards. We support your teams with the knowledge & expertise needed to make strategic design and manufacturing decisions.



CERTIFICATED PART 145  
REPAIR STATION



AGDISPLAYS IS  
ISO 14001, 45001 & R2  
CERTIFIED

## CONTACT US

### HEADQUARTERS

AGDisplays, a dba of AssetGenie, Inc.  
220 Huff Ave, Suite 400  
Greensburg, PA 15601

### CONTACT BY PHONE

Toll Free: 844-841-6851  
Office: 724-552-4904  
Fax: 724-552-4905

### CONTACT BY EMAIL

[sales@agdisplays.com](mailto:sales@agdisplays.com)  
[info@agdisplays.com](mailto:info@agdisplays.com)  
[support@agdisplays.com](mailto:support@agdisplays.com)

### GET CONNECTED WITH AGDISPLAYS

Join our social community to stay in touch with all of our latest news, events and promotions.

