



220 Huff Ave, Suite 400
Greensburg, PA 15601



PH: (724) 552-4904
F: (724) 552-4905



sales@agdisplays.com
agdisplays.com



Advanced LCD Solutions Specialist

PUBLIC HEALTH DIGITAL SIGNAGE



Temperature Monitor



AGDisplays is now offering leading edge Temperature Measurement & Face Recognition Monitors for commercial and industrial use. The product aids in disease prevention and control, with contactless temperature detection, facial recognition software and NFC reading capabilities. Our monitoring system features a convenient 8 inch IPS screen and performs temperature detection with an infrared thermal imaging module from a distance of .5 meter to 1 meter.

The facial recognition technology identifies users even with masks on, to provide accurate tracking for single or multiple people at a time and can store a library of up to 30,000 faces. Abnormal temperature values are custom-set and alarm may be enabled. For accurate and consistent imaging, our monitoring system employs LED & IR dual photo flood lighting. Models are available as wall mounted or on a standing display.

DESIGNED FOR

- Small Business Applications
- Hospitals & Institutions
- Factories & Offices
- Schools & Learning Facilities
- Distribution Centers
- Other Places With Heavy Traffic



Temperature Monitor



BASE UNIT: AG080-A-WX-4-2-TEM-V0



ILLUMINATED STAND P/N: AG080-STD-43

- Height: 110 cm
- 2 USB ports
- Base with adjusting screws
- Blue light strip
- Cold rolled plate painting

Temperature Monitor



WALL MOUNTED P/N: AG080-A-WX-4-2-TEM-V1

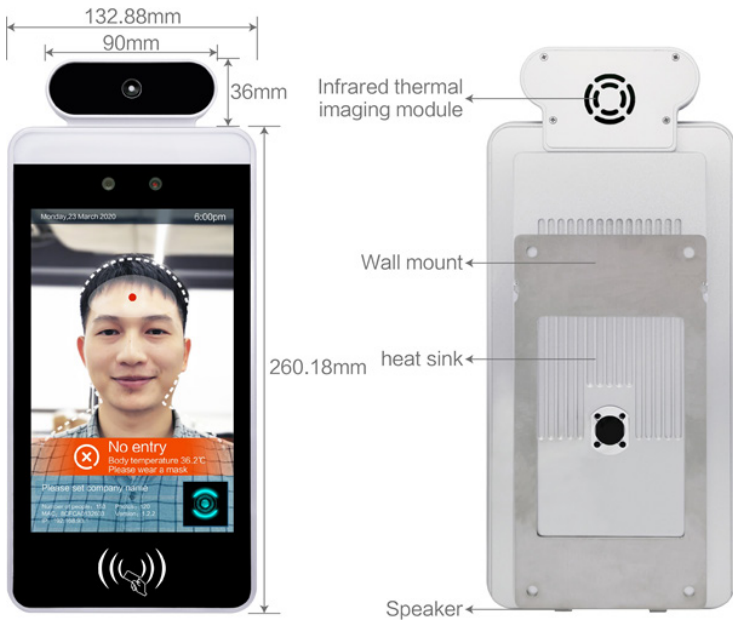
1. Use screws to mount bracket to the wall installation position as specified by device.
2. Fix the upper slot of the module device on the mainframe hook of the wall-mounting bracket, and fix the hole under the device with a combination screw.

TABLE STAND UNIT P/N: AG080-A-WX-4-2-TEM-V3

- Base thickness: 3.8 cm
- 2 USB ports
- Adjusting screws
- Blue light strip
- Cold rolled plate painting



Temperature Monitor



IC/ID CARD

- Employee database
- PC/device sync capabilities
- Remote software management
- Facial recognition

SCREW BASE

Commonly used at gates, fastened by screw base.



Specifications



CAMERA

Resolution	2 million pixels
Type	Binocular wide dynamic camera
Aperture	F2.4
Focusing distance	50-150cm
White balance	auto
Photo flood light	LED & IR dual photo flood light

SCREEN

Size	8.0 inch IPS LCD screen
Resolution	800×1280
Touch	In development

PROCESSOR

CPU	RK3288 quad-core (optional RK3399 six-core, MSM8953 eight-core)
------------	---

Storage	EMMC 8G
----------------	---------

CONNECTIVITY

Network module	Ethernet and wireless (WIFI)
Audio	2.5W / 4R speakers
USB	1 USB OTG, 1 USB HOST standard A port
Serial communication	1 RS232 serial port
Relay output	1 door open signal output
Wiegand	One Wiegand 26/34 output, one Wiegand 26/34 input
Upgrade button	Support Uboot upgrade button
Wired network	1 RJ45 Ethernet socket

FUNCTION

Credit card reader	Optional IC card reader, ID card, ID card
Face Detection	Supports detection and tracking of multiple people at the same time
Face library	Up to 30,000
1: N face recognition	Support
1: 1 face comparison	Support
Stranger detection	Support
Identify distance configuration	Support
UI interface configuration	Support
Upgrade remotely	Support
Interface	Interfaces include device management, personnel / photo management, record query, etc.
Deployment method	Support public cloud deployment, privatized deployment, LAN use, stand-alone use

INFRARED THERMAL IMAGING MODULE

Temperature Detection	Support
Temperature detection distance	1 meter (optimal distance 0.5 meter)
Temperature measurement accuracy	≤ ±0.5°C
Temperature measurement range	10°C ~42°C

Specifications



- Thermal field of view** 32 X 32°C
- Visitors' temperature is normal and released directly** Support
- Abnormal temperature alarm** Support (temperature alarm value can be set)

GENERAL PARAMETERS

- Power** DC12V (±10%)
- Operating temperature** 0°C~60°C
- Storage temperature** -20°C~60°C
- Power consumption** 13.5W (Max)
- Installation method** Gate bracket or wall mount
- Size** Standard:
274.24x128x21.48 mm
IC card/ID card:
296.18x132.88x25 mm
- Packing list** Machine x1, power adapter x1, manual x1, certificate of conformity x1

WIRE INTERFACE DEFINITION

Relay	Pin 1: COM Pin 2: NO
Wigan Input	Pin 1: D0_IN Pin 2: D1_IN Pin 3: 12V Pin 4: GND
Wigan Output	Pin 1: D0_OUT Pin 2: D1_OUT Pin 3: GND
232 Serial Port	Pin 1: 232_RX1 Pin 2: 232_TX1 Pin 3: GND



Sanitizing Station



Improve interactivity and trust by creating a safe zone for customers. Install a digital sanitization display system in your place of business to promote sanitary conditions while you build trust between you and customers. As they cleanse their hands, your marketing message captivates their attention and delivers an effective message on the stunning LCD display.

AGDisplays' hand sanitization system is a digital marketing platform and hand sanitizing dispenser that features remote controlled distribution and playback of all sorts of content. Use a central network to promote content or entertain with TV programs, advertisements, menus and customer information on displays located at multiple sites. Playback content is updated through a digital signage app on the Android platform.



DESIGNED FOR

- Small Business Applications
- Hotels/Hospitality
- Retail & Grocery Settings
- Financial & Banking Institutions
- Museums and Parks
- Malls & Shopping Centers
- Subway & Transportation Stations
- Airport Terminals
- Doctor's Offices & Outpatient Facilities
- Waiting Rooms & Show Rooms

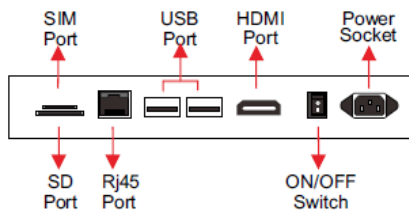
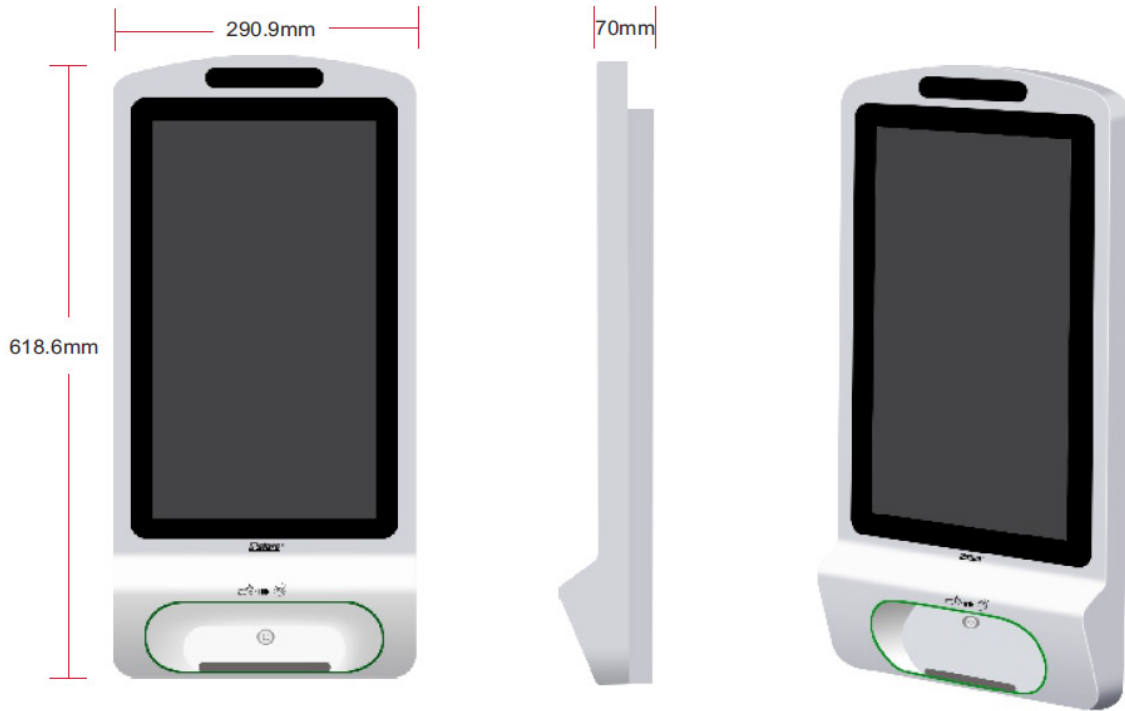
KEY FEATURES

- Android 7.1 Operating System
- Rockchip RK3288 Quad-Core CPU
- 2/4GB DDR3 + 8/16GB Flash
- 802.11 b/g/n Internal Wifi
- 3G/WIFI/WLAN Network Connection
- Remote Management Software
- Portrait & Landscape Display Mode
- 1080P Display Output
- Auto - Dispenser
- Waterproof
- PCAP Touch Screen (optional)
- Battery (optional)
- 700nits High Brightness (optional)
- Camera (optional)
- Free Standing Bracket (optional)

SANITIZER STATION



SANITIZER WITH TOUCH P/N: AG156-A-H-4-2-SAN-V1
SANITIZER WITHOUT TOUCH P/N: AG156-A-H-4-2-SAN-V1.1



SANITIZER STAND



SOLD SEPARATELY
STAND P/N: ACD156-STD-V2



Specifications



PANEL

Panel Model	15.6 inch TFT LCD
Max Resolution	1920x1080
Aspect Ratio	16:09
Pixel Pitch	0.17925x0.17925
Viewing Angle	85/85/85/85
Contrast Ratio	700:1
Brightness	300 cd/m ²
Response Time	25 ms
Display Area (mm)	344.16x193.59mm
Panel Size(mm)	359.5x223.8x3.2mm
Screen Weight	1.2kg
Lamp Type	WLED

INTERNAL MEDIA PLAYER

CPU	Quad-core ARM Cortex-A17, 1.8GHz
GPU	ARM Mali-T764
RAM	2/4GB DDR3
ROM	8/16 GB Flash
OS	Android 7.1

CONNECTOR

USB 2.0	X2
HDMI (Output)	X1
SD	X1
Rj45	X1
3G SIM (Optional)	X1

CONNECTIVITY

LAN	RJ45 Port, 10/100M Ethernet
WiFi	Built-in WiFi 802.11 B/G/N
3G (Optional)	WCDMA

FILE SUPPORT

Video	H.264, MKV, WMV9, MPEG 1/2/4, HD Divx, Xvid, RM/ RMVB
Image	BMP/PNG/GIF/JPEG
Audio	MP3,WMA,WAV,EAAC+, MP2 dec, Vorbis (Ogg), AC3, FLAC, APE, BSAC
Scrolling Text	txt

HDMI DISPLAY

Output Mode	HDMI 480P HDMI 576P HDMI 720P 50Hz HDMI 720P 60Hz HDMI 1080I 50Hz HDMI 1080I 60Hz HDMI 1080P 24Hz HDMI 1080P 50Hz HDMI 1080P 60Hz
--------------------	---

GENERAL

Display Mode	Portrait & Landscape
Touch	PCAP touch (optional)
Main Power	AC 100-240V, 50-60 Hz
Consumption	16 W
Sound	Built in speakers: 2 x 5W
Certifications	CE, FCC, ROHS
Accessories	Remote control, power supply, user manual, keys, screws
On Screen Display Languages	English, French, German, Ital- ian, Polish, Russian, Simplified & Traditional Chinese, Spanish, Turkish, Arabic, Japanese and more.

THANK YOU

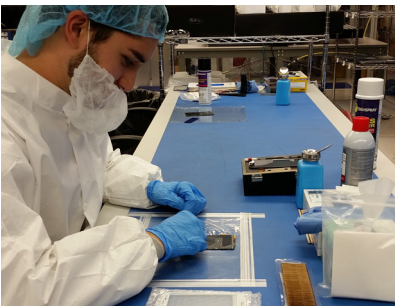
Thank You

|||||

COMMUNITY OF EXPERTS

Whether we are met with a new design or challenged with improving an existing design, AGDisplays supports your team by delivering unparalleled LCD expertise and technology. AGDisplays' partners benefit from our efficient design process and our dedication to creating quality design solutions.

We saw the need for off the shelf products, so we've added an expansive line of open/closed frame LCDs, digital signage, and all-in-one products. We offer unique LCD products like advanced touchscreen tabletops, high quality medical displays and rugged mobile devices. All of which can benefit from our value add integration services. Our products are used across many industries including Military, Avionics, Marine, Industrial, Medical, Transportation and many more.



CERTIFICATIONS

AGDisplays values high-quality working and design standards. We support your teams with the knowledge & expertise needed to make strategic design and manufacturing decisions.



CERTIFICATED PART 145
REPAIR STATION



AGDISPLAYS IS
ISO 14001, 45001 & R2
CERTIFIED

CONTACT US

HEADQUARTERS

AGDisplays, a dba of AssetGenie, Inc.
220 Huff Ave, Suite 400
Greensburg, PA 15601

CONTACT BY PHONE

Toll Free: 844-841-6851
Office: 724-552-4904
Fax: 724-552-4905

CONTACT BY EMAIL

sales@agdisplays.com
info@agdisplays.com
support@agdisplays.com

GET CONNECTED WITH AGDISPLAYS

Join our social community to stay in touch with all of our latest news, events and promotions.

