



220 Huff Ave, Suite 400
Greensburg, PA 15601



PH: (724) 552-4904
F: (724) 552-4905



sales@agdisplays.com
agdisplays.com



Advanced LCD Solutions Specialist

CUSTOMIZED RUGGED MOBILE



**CUSTOMIZABLE
OR OFF THE SHELF
RUGGED MOBILE DEVICES**

Industrial Strength

|||||



RUGGED DESIGN

+ WATERPROOF

+ DROPPROOF

+ DUSTPROOF

TOUCHSCREEN

+ CAPACITIVE

+ MULTI TOUCH

+ IPS TECHNOLOGY

HIGH PERFORMANCE

+ HIGH DEFINITION

+ IP RATED

+ MULTI-CAMERA

NOTE: specifications subject to change without notice.

Customize Features



CUSTOMIZED PRE-LOADED APPS

Pre-load with specific or custom-created apps.
Note: AG Displays does not develop apps.

PRINTED LOGO ON BACK

Customer-provided text or image can be printed with ink onto the device. Requirements subject to device model.

LOGO SPLASH SCREEN ON START UP

Customer-provided text or image will appear on-screen during device boot up.

DEFAULT SETTINGS CHANGED

Setting preferences can be customized before reaching the user, i.e., security passcode or location settings.

PLASTIC: CUSTOM PANTONE COLOR

Device may be manufactured to match Pantone colors.



NOTE: specifications subject to change without notice.

Customize Features



Software Customizations

SPLASH SCREEN

A customer-provided logo, text, or image can be loaded into the device software to appear on splash screen as the device boots up.

PART NUMBER

Indicate your specific part number to appear in the device's About section in the settings menu.

DEFAULT SETTINGS

Setting preferences can be customized before reaching the user for security and device safety. Pre-set a numerical or pattern passcode, or configure location settings. Adjust screen settings and battery saving options for device longevity.

PRE-LOADED APPS

Pre-load your device with select or custom-developed apps. Note: AG Displays does not develop apps. We are not involved in coding, or troubleshooting customer apps beyond normal hardware assistance.

FACTORY MODE

Factory mode allows you to test the hardware of the device. Factory mode tests include: device info, memory & SIM, LCD, key, vibration, touch, flash-light/backlight, FM radio, audio circuit, speaker, receiver, power info, camera, accelerometer, BT, WIFI, GPS, RTF. Additional test modes available.

GOOGLE SERVICES

Google Services are added at the request of customer. Apps can include Google Play, Music, Sheets, Docs, Chrome, Drive, Gmail, Books, Keep, Maps, Voice, Hang Outs, Photos, Earth, YouTube and more.

UPON REQUEST

Don't see a customization you had in mind? Our experts work hard to meet your needs. If you have a specific request, talk to an AGD team member and we will do our best to accommodate your requirements.



NOTE: specifications subject to change without notice.

Customize Features



Hardware Customizations



LOGO SCREEN PRINT

Customer provides text or image to be silk screened onto back of device. Printed label option also available.

RUBBER CASE

Protective rubber casings can be manufactured in any Pantone color.

PLASTICS COLOR

Device can be manufactured in a specific Pantone color.

NFC/RFID

NFC or RFID reading capabilities can be added or removed from a device

SYSTEM ON CHIP (SOC) OPTIONS

Interchangeable Rockchip SOC for wall mount devices. The Rockchip is a cost-effect, mid-range SOC for tablets combining a powerful GPU with CPU for a high-performing, power conserving device.

ANDROID OPTIONS

We offer various Android software versions, based on CPU compatibility.

SDK SOFTWARE

We provide software that allows for support in application development. Note, AGDisplays does not aid in actual application development.

RAM OPTIONS

Select devices have multiple RAM and internal memory options available.

COM PORT

USB port may be added or removed.

CAMERA

Cameras can be added, removed or upgraded according to processor compatibility.

BATTERY

Battery can be replace with direct DC power.

NOTE: specifications subject to change without notice.

AG050S-A-D-4-2-IP68-V1

|||||

The 5 inch AG050S-A-D-4-2-IP68-V1 features an Android 8.1 operating system, and a built in Mediatek MTK6739 Quad-core 1.3GHz processor for fast performance without boosting clock speed.

Customization Options:

- Software: preloaded apps, custom settings, part number change, custom logo
- Hardware: custom plastic color, rubber case



CPU	Mediatek MTK6739 Quad-core 1.3 GHz	Battery	3750 mAh Lithium Battery
Operating System	Android 8.1	Rugged Durability	IP68 Waterproof and dust-proof, DropProof Rate: 810G
Display & Touch	5 inch capacitive multi-touch screen, TN 960x480 Pixels	Sensors	G-sensor, light sensor, proximity sensor, gyroscope sensor
Cameras	Front 5 M pxls, Back 8 M pxls	NFC Function	Frequency is 13.56 MHZ
Memory & Storage	2GB RAM + 16GB Internal storage	Fingerprint	Support
WIFI	802.11 a/b/g/n 2.4G+5Ghz Dual-band wifi wireless and bluetooth 4.0	PTT Function	Optional
GPS	Support GPS and GLONASS or GPS+Beidou	Dimensions	152.2x73.3x16.1 mm

NOTE: specifications subject to change without notice.

AG050S-A-F-8-3-IP68-V1



The 5 inch AG050S-A-F-8-3-IP68-V1 features an Android 8.1 operating system, and a built in Mediatek MTK6750 Octa-core 1.5GHz processor for fast performance without boosting clock speed.

Customization Options:

- Software: preloaded apps, custom settings, part number change, custom logo
- Hardware: custom plastic color, rubber case



CPU	Mediatek MTK6750 Octa-core 1.5GHz	GPS	Support GPS and GLONASS
Operating System	Android 7.0 or 8.1	Battery	Built-in 5000 mAh Lithium Battery
Display & Touch	5 inch Capacitive Multi-touch screen, IPS FHD 1920x1080 Pixels	Rugged Durability	IP68 Waterproof and dust-proof, DropProof Rate: 810G
Cameras	Front 5Mpxls camera, Back 13Mpxls camera	Sensors	G-sensor, Light sensor, Proximity sensor, E-Compass, Gyroscope Sensor
Memory & Storage	3GB RAM + 32GB Internal storage, 4G RAM + 64G Internal storage is optional	NFC Function	Frequency is 13.56 MHZ
WIFI	802.11 a/b/g/n 2.4G+5Ghz Dual-band wifi wireless and bluetooth 4.0	SOS Function	Support
Dual SIM Card	Support	PTT Function	Optional
		Dimensions	152x77x16.5 mm

NOTE: specifications subject to change without notice.

AG052S-A-F-8-6-IP68-V1

|||||

The 5.2 inch AG052S-A-F-8-6-IP68-V1 features an Android 8.1 operating system, and a built in Mediatek MTK6757 Helio P25 Octa-core Cortex-A53 2.5GHz processor for fast performance without boosting clock speed.

Customization Options:

- Software: preloaded apps, custom settings, part number change, custom logo
- Hardware: custom plastic color, rubber case



CPU	Mediatek MTK6757 Helio P25 Octa-core Cortex-A53 2.5 GHz	Dual SIM Card	Support
Operating System	Android 8.1	Battery	5580 mAh Lithium Battery
Display & Touch	5.2 inch capacitive multi-touch screen, IPS FHD 1920x1080 pixels	Rugged Durability	IP68 waterproof and dust-proof, dropproof rate: 810G
Cameras	Front 8 M camera, back 21 M Camera	Sensors	G-sensor, light sensor, proximity sensor, E-Compass, gyroscope sensor, geomagnetism
Memory & Storage	6 GB RAM + 64 GB Internal storage	NFC Function	Frequency is 13.56 MHZ
WIFI	802.11 a/b/g/n 2.4G+5G Dual-band wifi wireless and blue-tooth 4.0	Fingerprint	Support
		Dimensions	164x81x15.5 mm

NOTE: specifications subject to change without notice.

AG055S-A-H-8-4-IP68-V1

|||||

The 5.5 inch AG055S-A-H-8-4-IP68-V1 features an Android 8.1 operating system, and a built in Mediatek MTK6763 Octa-core Cortex-A53 2.0GHz processor for fast performance without boosting clock speed.

Customization Options:

- Software: preloaded apps, custom settings, part number change, custom logo
- Hardware: custom plastic color, rubber case



CPU	Mediatek MTK6763 Octa-core Cortex-A53 2.0GHz	GPS	Support GPS & GLONASS or GPS + Beidou
Operating System	Android 8.1	Battery	3600 mAh lithium battery
Display & Touch	5.5 inch Capacitive Multi-touch screen, IPS HD 1280x640 Pixels	Rugged Durability	IP68
Cameras	Front 8M pxls, back 13M pxls	Sensors	G-sensor, light sensor, proximity sensor, gyroscope sensor
Memory & Storage	4GB RAM + 64GB Internal storage	NFC Function	Frequency is 13.56 MHZ
WIFI	802.11 a/b/g/n 2.4G + 5Ghz Dual-band wifi wireless and bluetooth 4.2	Fingerprint	Support
		PTT Function	Support
		Dimensions	155.2x74.6x11.9 mm

NOTE: specifications subject to change without notice.

AG055S-A-H-8-4-IP68-V2

|||||

The 5.5 inch AG055S-A-H-8-4-IP68-V2 features an Android 8.0 operating system, and a built in Mediatek MTK6750T Octa-core Cortex-A53 1.5GHz processor for fast performance without boosting clock speed.

Customization Options:

- Software: preloaded apps, custom settings, part number change, custom logo
- Hardware: custom plastic color, rubber case



CPU	Mediatek MTK6750T Octa-core Cortex-A53 1.5GHz	Dual SIM Card	Supported
Operating System	Android 8.0	GPS	Support GPS and GLONASS
Display & Touch	5.5 inch capacitive multi-touch screen, IPS 1440x720 Pixels	Battery	5500mAh Lithium Battery
Cameras	Dual-rear 13MP & 8 MP, Front 5 MP	Rugged Durability	IP68 Waterproof and Dust-proof, DropProof Rate: 810G
Memory & Storage	4GB RAM + 64GB Internal storage	Sensors	G-sensor, Light sensor, Proximity sensor, E-Compass, GyroscopeSensor, Geomagnetism
WIFI	802.11 a/b/g/n 2.4G + 5Ghz dual-band wifi wireless and bluetooth 4.0	USB Interface	1 x Micro USB
		Dimensions	161.3 x 77.8 x 14.2 mm

NOTE: specifications subject to change without notice.

AG055S-A-F-8-4-IP68-V1

|||||

The 5.5 inch AG055S-A-F-8-4-IP68-V1 features an Android 7.0 operating system, and a built in Mediatek MTK6755 Octa-core Cortex-A53 2.0GHz processor for fast performance without boosting clock speed.

Customization Options:

- Software: preloaded apps, custom settings, part number change, custom logo
- Hardware: custom plastic color, rubber case



CPU	MTK6755 Octa-core Cortex-A53 2.0GHz	PTT Function	Support
Operating System	Android 7.0	GPS	Support GPS & GLONASS or GPS+Beidou
Display & Touch	5.5 inch Capacitive Multi-touch screen, IPS FHD 1920*1080 Pixels	Tri-Proof Rate	IP68 Waterproof and dust-proof, DropProof Rate: 810G
Cameras	Front 8M pxls, back 16M pxls	Sensors	G-sensor, Light sensor, Proximity sensor, E-Compass, Pressure sensor, Gyroscope Sensor
Memory & Storage	4GB RAM + 64GB Internal storage, micro SD card slot can support max 128GB TF card	NFC function	Frequency is 13.56MHZ
WIFI	802.11 a/b/g/n 2.4G+5G Dual-band wifi wireless and blue-tooth 4.0	Fingerprint	Support
Battery	6150 mAh Lithium Battery	Dims & Weight	168x86x17mm, N.W: about 260g

NOTE: specifications subject to change without notice.

AG055S-A-F-8-4-IP68-V2

|||||

The 5.5 inch AG055S-A-F-8-4-IP68-V2 features an Android 7.0 operating system, and a built in MTK6750V/CT Octa-core Cortex-A53 1.5GHz; processor for fast performance without boosting clock speed.

Customization Options:

- Software: preloaded apps, custom settings, part number change, custom logo
- Hardware: custom plastic color, rubber case



CPU	Mediatek MTK6750V/CT Octa-core Cortex-A53 1.5GHz	GPS	Support GPS & GLONASS
Operating System	Android 7.0, (In future can upgrade to 8.1)	Battery	9000 mAh lithium battery
Display & Touch	5.5 inch Capacitive Multi-touch screen, IPS FHD 1920x1080 Pixels	Rugged Durability	IP68
Cameras	Front 5M pxls, back 13M pxls	Sensors	G-sensor, Light sensor, Proximity sensor, E-Compass, Gyroscope Sensor
Memory & Storage	4GB RAM + 64GB Internal storage	NFC Function	Frequency is 13.56 MHZ
WIFI	802.11 a/b/g/n 2.4G + 5G Dual-band wifi wireless and bluetooth 4.0	Fingerprint	Support
Dual SIM Card	Support	PTT Function	Optional
		Dimensions	168.8x86.5x15.9 mm

NOTE: specifications subject to change without notice.

AG055S-A-F-8-4-IP65-V1

|||||

The 5.5 inch AG055S-A-F-8-4-IP65-V1 features an Android 7.1 operating system, and a built in Qualcomm MSM8953 Octa-core 1.8GHZ-2.0GHz processor for fast performance without boosting clock speed.

Customization Options:

- Software: preloaded apps, custom settings, part number change, custom logo
- Hardware: custom plastic color, rubber case



CPU	Qualcomm MSM8953 Octa-core 1.8 GHZ-2.0 GHz	Infrared Module	Built-in infrared module to collect Electric meter data: send & receive frequency: 38 KHz, send & receive angle: +/- 45 degree, distance >=10 Meters, sending max power: 160 mw; optional
Operating System	Android 7.1, Android 8.1 in the future	NFC Module	Frequency is 13.56 Mhz
Display & Touch	5.5inch capacitive multi-touch IPS FHD 1920x1080	2D Barcode Scanner	Optional
Cameras	Front 5.0 M camera, back 13.0 M camera	UHF RFID	Readable distance is about 3-5Meters, optional; R2000 Module (readable distance is about 10 meters) is also optional
Memory & Storage	Default is 4G RAM + 32 G Internal storage, (2G+16G, 3G+32G, 4G RAM+64G Internal storage is optional)	I/O Ports	1*MICRO USB, 1*SIM Slot, 1*RS485 Communication port (optional).
WIFI	802.11 a/b/g/n 2.4Ghz + 5Ghz dual-band wifi wireless and bluetooth 4.2	Scan Trigger	Optional
Navigation & Location	Support GPS / Glonass or Beidou	Temp & Humidity	Work temp.: -20-50°C, storage temp.: -20-70°C; humidity: 5%-95%
Battery	Built-in 6000mAh Lithium Battery		
Rugged Durability	Waterproof and dustproof rate: IP65; Ruggedness: 810G compliant		

NOTE: specifications subject to change without notice.

AG055S-A-H-8-2-IP68-V1

|||||

The 5.5 inch AG055S-A-H-8-2-IP68-V1 features an Android 7.1 operating system, and a built in Qualcomm MSM8953 Octa-core 2.0GHz processor for fast performance without boosting clock speed.

Customization Options:

- Software: preloaded apps, custom settings, part number change, custom logo
- Hardware: custom plastic color, rubber case



CPU	Qualcomm MSM8953 Octa-core 2.0GHz	Sensors	G-sensor, Gyro-sensor, Compass-sensor
Operating System	Android 7.1, Android 8.1 in the future	Walkie Talkie	Digital + analog 2 in 1, is optional; infrared and walkie-talkie, pick one of two
Display & Touch	5.5 inch Capacitive Multi-touch IPS HD 1280x720 FHD screen, 1920x1080 is optional	Fingerprint Scanner	Capacitive fingerprint scanner 508DPI, FBI certificated, optional
Cameras	Front 5.0 M camera, Back 13.0 M Camera	Rugged Durability	Waterproof and dustproof rate: IP68; Ruggedness: comply with 810G
Memory & Storage	2G RAM + 16G Internal storage, 4G RAM+64G Internal storage is optional	ID Card Reader Module	Optional; ID card and UHF RFID only pick one of two
WIFI	a/b/g/n wireless and Bluetooth 4.2	Back-clip UHF RFID	Readable distance is about 3-5Meters, Optional; R2000 Module is also optional
NFC Module	Frequency is 13.56 Mhz, optional	I/O Ports	1*MICRO USB, 1*SIM Slot, 1*PSAM Slot (optional), 1*RS485 Communication port (optional)
GPS	GPS, GLONASS, Beidou	Face Recognition	Optional; works with ID Card
Battery	Built-in 5000 mAh Lithium Battery		
2D Barcode Scanner	Optional		

NOTE: specifications subject to change without notice.

AG057S-A-F-8-6-IP68-V1

|||||

The 5.7 inch AG057S-A-F-8-6-IP68-V1 features an Android 8.1 operating system, and a built in Mediatek MTK6763 Octa-core Cortex-A53 2.0GHz processor for fast performance without boosting clock speed.

Customization Options:

- Software: preloaded apps, custom settings, part number change, custom logo
- Hardware: custom plastic color, rubber case



CPU	Mediatek MTK6763 Octa-core Cortex-A53 2.0GHz	GPS	Support GPS & GLONASS or GPS + Beidou
Operating System	Android 8.1	Battery	5000 mAh lithium battery
Display & Touch	5.7 inch capacitive multi-touch screen, IPS FHD 2160x1080 Pixels	Rugged Durability	IP68 waterproof and dust-proof, dropproof rate: 810G
3 Cameras	Front 8M pxls, back 13M + 5M pxls dual camera	Sensors	G-sensor, light sensor, proximity sensor, E-Compass, gyroscope sensor
Memory & Storage	6GB RAM + 128GB Internal storage, micro SD card slot can support max 128GB TF card	NFC Function	Frequency is 13.56 MHZ
WIFI	802.11 a/b/g/n 2.4G+5Ghz Dual-band wifi wireless and bluetooth 4.2	Fingerprint	Support
		PTT Function	Support
		Dimensions	167x78x13.8 mm

NOTE: specifications subject to change without notice.

AG057S-A-H-8-4-IP68-V1

|||||

The 5.7 inch AG057S-A-H-8-4-IP68-V1 features an Android 8.1 operating system, and a built in Mediatek MTK6763 Octa-core Cortex-A53 2.0GHz processor for fast performance without boosting clock speed.

Customization Options:

- Software: preloaded apps, custom settings, part number change, custom logo
- Hardware: custom plastic color, rubber case



CPU	Mediatek MTK6763 Octa-core Cortex-A53 2.0GHz	Battery	4800mAh Lithium Battery
Operating System	Android 8.1	Rugged Durability	IP68 Waterproof and dust-proof, DropProof Rate: 810G
Display & Touch	5.7 inch Capacitive Multi-touch screen, IPS FHD 1440x720 Pixels	GPS	Supports GPS, GLONASS, GPS+Beidou
Cameras	Front 8Mpxls camera, Back 13M+0.3Mpxls dual camera	Sensors	G-sensor, Light sensor, Proximity sensor, E-Compass, Gyroscope Sensor
Memory & Storage	4GB RAM + 64GB Internal storage, micro SD card slot can support max 128GB TF card	WIFI	802.11 a/b/g/n 2.4 G+5 Ghz Dual-band wifi wireless and bluetooth 4.2
Fingerprint	Supported	Dims & Weight	157x76x13mm, N.W: about 260g
NFC Function	Frequency is 13.56 Mhz	Dimensions	172x81x13.6 mm

NOTE: specifications subject to change without notice.

AG059S-A-F-8-4-IP68-V1

|||||

The 5.99 inch AG059S-A-F-8-4-IP68-V1 features an Android 8.1 operating system, and a built in Mediatek MT-K6763T Helio P23 Octa-core 2.5GHz processor for fast performance without boosting clock speed.

Customization Options:

- Software: preloaded apps, custom settings, part number change, custom logo
- Hardware: custom plastic color, rubber case



CPU	Mediatek MTK6763T Helio P23 Octa-core 2.5GHz	GPS	Support GPS and GLONASS
Operating System	Android 8.1	Battery	5500mAh Lithium Battery
Display & Touch	5.99 inch capacitive multi-touch screen, IPS FHD 2160x1080 Pixels	Rugged Durability	IP68 Waterproof and dust-proof, DropProof Rate: 810G
Cameras	Front 8M pxls, back 13M + 8M pxls dual camera	Sensors	G-sensor, Light sensor, Proximity sensor, E-Compass, Gyroscope Sensor, Geomagnetism, Barometer, Coulometer
Memory & Storage	4GB RAM + 64GB Internal storage	Fingerprint	Support
WIFI	802.11 a/b/g/n 2.4G+5G Dual-band wifi wireless and bluetooth 4.0	NFC Function	Frequency is 13.56 MHZ
Dual SIM Card	Supported	Dimensions	172x81x13.6 mm

NOTE: specifications subject to change without notice.

AG070-A-WX-4-2-IP54-V1

|||||

AG070-A-WX-4-2-IP68-V1 is a 7.0" rugged tablet with Android 5.1 operating system, a Quad-Core MediaTek MTK6735 CPU, and WXGA 1280 x 800 resolution. AG070-A-WX-4-2-IP68-V1 features an IP68 ingress protection rating, dual SIM card slots, NFC compatibility, and a re-chargeable Lithium battery.

Customization Options:

- Software: preloaded apps, custom settings, part number change, custom logo
- Hardware: custom plastic color, rubber case



CPU	MediaTek MTK6735 Quad-core, Cortex-A7 1.3GHz	Wifi	802.11 b/g/n
Operating System	Android 6.0	GPS	GPS + GLONASS
Rugged Durability	IP54 rating	USB interface	3 x Micro USB
Display & Touch	7 inch TFT-LCD Capacitive Multi-touch 1280 x 800 resolution	Sensors	Optional: NFC, 2D barcode, fingerprint, iris
Cameras	2.0 MP Front / 5.0 MP Rear	Network	"4G Networks: Support GSM: B5/B8/B3/B2=850/900/1800/1900Mhz, 3G WCDMA: B1/B2/B5=2100/1900/850MHZ; 4G TDD-LTE: B34/B39/40/B41=2100/1900/2300/2500MHZ; 4G FDD LTE: B1/B2/aB3/2100/1900/1800/850/900MHZ
Memory & Storage	2 GB RAM + 16 GB Internal storage	Expandable Memory	TF Card
NFC Function	13.56Mhz		
Battery	Lithium 8800mAh		

NOTE: specifications subject to change without notice.

AG101-A-WX-4-2-IP54-V1

|||||

The AG101-A-WX-4-2-IP54-V1 is a 10.1" semi rugged tablet with IP54 rating. This tablet has an Android 6.0 operating system, a quad core processor, and a TF card for expandable memory.

Customization Options:

- Software: preloaded apps, custom settings, part number change, custom logo
- Hardware: custom plastic color, rubber case



CPU	Mediatek MT8163 Quad-core 1.3GHz	Battery	Lithium7500mAh
Operating System	Android 6.0	Wifi	802.11b/g/n/ac wireless (2.4G/5G Dual-band wifi)
Rugged Durability	IP54 rating	GPS	Yes
Display & Touch	10.1 inch TFT-LCD Capacitive Multi Touch 1280 x 800 resolution	USB interface	1 x Micro USB , 1 x USB Type C
Cameras	Front 2.0MP, Rear 8.0MP	Product Dimensions	262mm x 172mm x 10.5mm
Memory & Storage	2 GB RAM + 32 GB Internal storage	Headphone Jack	3.5mm Audio out
HDMI Port	1 x Micro HDMI port	Expandable Memory	TF card

NOTE: specifications subject to change without notice.

AG080-A-WX-4-4-IP67-V1

|||||

AG080-A-WX-4-4-IP67-V1 is an 8.0" rugged tablet with Android 5.1 operating system, a Quad-Core Intel Cherry Trail Z8350 CPU, and WXGA 1280 x 800 resolution. AG080-A-WX-4-4-IP67-V1 features an IP67 ingress protection rating, NFC compatibility, HDMI output, and a rechargeable Lithium battery.

Customization Options:

- Software: preloaded apps, custom settings, part number change, custom logo
- Hardware: custom plastic color, rubber case



CPU	Intel Cherry Trail Z8350 Quad Core	Battery	Lithium 7800mAh
Operating System	Android 5.1	Wifi	802.11b/g/n/ac wireless (2.4G/5G Dual-band wifi)
Rugged Durability	IP67 waterproof rating	GPS	U-blox NEO 7
Display & Touch	8 inch TFT-LCD Capacitive Multi-touch 1280 x 800 resolution	USB interface	1 x Micro USB, 1 x USB 2.0 Host
Cameras	2.0 MP Front / 5.0 MP Rear	Sensors	Optional: 1D or 2D barcode scanner,
Memory & Storage	4GB DDR RAM + 64GB Internal storage	Network	3G and 4G Network: Standard is 3G WCDMA 900/2100MHz, 4G Frequency: FDD LTE Bands: B1/B3/B5/B7/B8/B20; TDD LTE Bands: B38/B39/B40/B41
NFC Function	13.56Mhz	Expandable Memory	TF Card

NOTE: specifications subject to change without notice.

AG080-W-WX-4-4-IP67-V1

|||||

The AG080-W-WX-4-4-IP67-V1 is an 8" rugged tablet with IP67 rating. This tablet has a Windows 10 Home operating system, a quad core processor, and a TF card for expandable memory.

Customization Options:

- Software: preloaded apps, custom settings, part number change, custom logo
- Hardware: custom plastic color, rubber case



CPU	Intel Cherry Trail Z8350 Quad Core	Wifi	802.11b/g/n/ac wireless (2.4G/5G Dual-band wifi)
Operating System	Windows 10 Home	GPS	U-blox NEO 7
Rugged Durability	IP67 waterproof rating	USB interface	2 x Micro USB, 1 x USB 2.0 Host
Display & Touch	8 inch TFT-LCD Capacitive Multi-touch 1280 x 800 resolution	Sensors	Optional: 1D or 2D barcode scanner,
Cameras	2.0 MP Front / 5.0 MP Rear	Network	3G and 4G Network: Standard is 3G WCDMA 900/2100MHz, 4G Frequency: FDD LTE Bands: B1/B3/B5/B7/B8/B20; TDD LTE Bands: B38/B39/B40/B41
Memory & Storage	4GB DDR RAM + 64GB Internal storage	Expandable Memory	TF Card
NFC Function	13.56Mhz		
Battery	Lithium 7800mAh		

NOTE: specifications subject to change without notice.

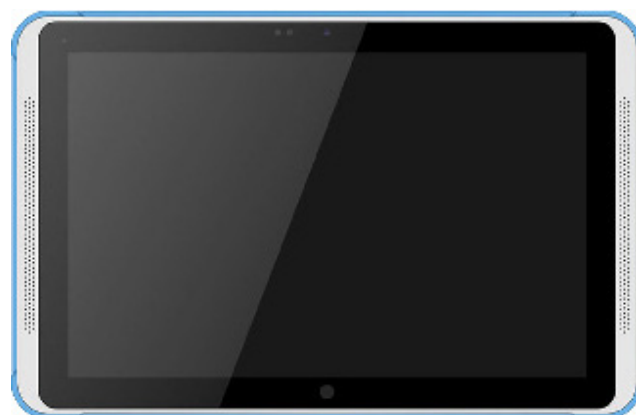
AG101-A-H-10-4-IP54-V1

|||||

AG101-A-H-10-4-IP54-V1 is a 10.1" semi-rugged tablet with Android 7.1 operating system, a Deca-Core MediaTek MT6797 CPU, and WUXGA 1920 x 1200 resolution. AG101-A-H-10-4-IP54-V1 features an IP54 ingress protection rating, Bluetooth 4.1 connectivity, and a rechargeable Lithium battery.

Customization Options:

- Software: preloaded apps, custom settings, part number change, custom logo
- Hardware: custom plastic color, rubber case



CPU	MediaTek MT6797 Helio X20 Deca (10)-core Cortex-A72 2.1GHz	Battery	Lithium7500mAH
Operating System	Android 7.1	Wifi	802.11 a/b/g/n 2.4G+5Ghz dual-band
Rugged Durability	IP54 rating	GPS	GPS / Beidou
Display & Touch	10.1 inch TFT-LCD Capacitive 1920 x 1200 resolution	USB interface	1 x Micro USB , 1 x USB Type C
Cameras	Front 3.0MP, Rear 12.0MP	Product Dimensions	242mm x 167mm x 10mm
Memory & Storage	4GB RAM + 32 GB Internal storage	Network	4G Networks: Support GSM: B5/B8/ B3/B2=850/900/1800/1900Mhz, 3G WCDMA B1=2100Mhz;TSD- WCDMA:B34/B39; TDD-LTE: B38/B39/ B40/1=2600/1900/2300/2500MHZ; FDD LTE: B1/B3/ B7=2100/1800/2600MHZ."
Headphone Jack	3.5mm Audio Out	Expandable Memory	TF Card

NOTE: specifications subject to change without notice.

AG080-A-WX-8-2-IP68-V1

|||||

AG080-A-WX-8-2-IP68-V1 is an 8.0" rugged tablet with Android 7.1 operating system, an Octa-Core Qualcomm MSM8953 CPU, and WXGA 1280 x 800 resolution. AG080-A-WX-8-2-IP68-V1 features an IP68 ingress protection rating, Bluetooth 4.2 connectivity, NFC compatibility, and a rechargeable Lithium battery.

Customization Options:

- Software: preloaded apps, custom settings, part number change, custom logo
- Hardware: custom plastic color, rubber case



CPU	Qualcomm MSM8953 Octa-core 1.8-2.0GHz	Wifi	802.11 a/b/g/n wireless
Operating System	Android 7.1	GPS	GPS / Glonass / Beidou
Rugged Durability	IP68 waterproof rating	USB interface	Micro USB
Display & Touch	8 inch TFT-LCD Capacitive Multi-touch 1280 x 800 resolution	Sensors	"Standard: G-sensor,Gyro-sensor,Compass-sensor; Optional: 2D barcode scanner, NFC, UHF RFID, Fingerprint scanner"
Cameras	5.0 MP Front / 13.0 MP Rear	Network	4G Support GSM: B5/B8/B3/B2 = 850/900/1800/1900Mhz, 3G WCDMA:2100MHZ;3G EVDO 800MHZ;TDS-CDMA: B34/B39 = 2010-2025/1880-1920Mhz; TDD-LTE: B39/B40/B41 = 1900/2300/2500MHZ; FDD LTE: B1/B3 = 2100/1800MHZ
Memory & Storage	2 GB RAM + 16GB Internal storage	Expandable Memory	None
NFC Function	13.56Mhz (Optional)		
Battery	Lithium3.7V/8500mAh		

NOTE: specifications subject to change without notice.

AG080-A-WX-8-2-IP68-V2

|||||

The AG080-A-WX-8-2-IP68-V2 is an 8" rugged tablet with IP68 rating. This tablet has an Android 8.1 operating system, an octa core processor, and 32 GB of internal memory.

Customization Options:

- Software: preloaded apps, custom settings, part number change, custom logo
- Hardware: custom plastic color, rubber case



CPU	MediaTek MTK6753 Octa-core 1.5GHz	Battery	Lithium 3.7V/ 10000mAh
Operating System	Android 8.1	Wifi	802.11 a/b/g/n 2.4G+5Ghz dual-band wifi
Rugged Durability	IP68 waterproof rating	GPS	GPS / Glonass
Display & Touch	8 inch TFT-LCD Capacitive Multi-touch 1280 x 800 resolution	Product Dimensions	243 mm x 158 mm x 23 mm
Cameras	Front 2.0MP, Rear 8.0MP	Headphone Jack	3.5 mm
Memory & Storage	2 GB RAM + 32 GB Internal storage	Network	4G Networks: support 2G GSM: B5/B8/B3=850/900/1800Mhz, 3G WCDMA: B1/B2/B5/B8=2100/1900/850/900MHZ 4G TDD LTE: B38/B39/B40/B41=2600/1900/2300/2500MHZ 4G FDD_LTE B1/B2/B3/B4/B5/B7/B8/B20=2100/1900/1800/1700/850/2600/800MHZ
NFC Function	Frequency is 13.56Mhz, is optional	Expandable Memory	None

NOTE: specifications subject to change without notice.

AG070-A-WX-8-2-IP68-V1



The AG070-A-WX-8-2-IP68-V1 is a 7" rugged tablet with IP68 rating. This tablet has an Android 8.1 operating system, a quad core processor, and micro SD card up 128 GB for expandable memory.

Customization Options:

- Software: preloaded apps, custom settings, part number change, custom logo
- Hardware: custom plastic color, rubber case



CPU	MediaTek MTK6762 Octa-core, 2.0GHz	Battery	Lithium9000mAh
Operating System	Android 8.1	Wifi	802.11 a/b/g/n
Rugged Durability	IP68 waterproof rating	GPS	GPS, AGPS
Display & Touch	7 inch TFT-LCD 5- Point Capacitive Multi-touch 1280 x 800 resolution	USB interface	5-Pin Micro USB
Cameras	Front: 2.0M, Rear: 13.0MP	Sensors	G sensor, light sensor, gyroscope, compass
Memory & Storage	2 GB RAM + 16GB Internal storage	Expandable Memory	Micro SD Max 128 GB
NFC Function	13.56Mhz		

NOTE: specifications subject to change without notice.

AG070-A-H-4-3-IP65-V1

|||||

The AG070-A-H-4-3-IP65-V1 is a 7" rugged tablet with IP65 rating. This tablet has an Android 5.1 operating system, a quad core processor, and TF card up to 64 GB for expandable memory.

Customization Options:

- Software: preloaded apps, custom settings, part number change, custom logo
- Hardware: custom plastic color, rubber case



CPU	MediaTek MTK6735V Quad-core, Cortex-A53 1.5GHz	Battery	Lithium 10000mAh
Operating System	Android 5.1	Wifi	802.11a/b/g/n
Rugged Durability	IP65 waterproof rating	GPS	GPS, Glonass is Optional
Display & Touch	7 inch IPS Capacitive Multi-touch 1280 x 720 resolution	USB interface	USB type C
Cameras	Front 5.0M camera, Back 13.0M	Sensors	NFC, Barcode, RFID, Fingerprint
Memory & Storage	3GB RAM + 32 GB Internal storage	Product Dimensions	237 mm x 137 mm x 29 mm
NFC Function	Frequency is 13.56Mhz; support ISO14443A/B/ISO15693, is optional;	Expandable Memory	TF Card up to 64 GB

NOTE: specifications subject to change without notice.

AG101-A-SX-4-2-IP65-V4

|||||

The AG101-A-SX-4-2-IP65-V4 is a 10.1" rugged tablet with IP65 rating. This tablet has an Android 4.4 operating system, a quad core processor, and TF card for expandable memory.

Customization Options:

- Software: preloaded apps, custom settings, part number change, custom logo
- Hardware: custom plastic color, rubber case



CPU	Intel Atom Bay-Trail Z3735F Quad-core 1.33-1.8GHz	Battery	Lithium 3.7V/10000mAh
Operating System	Android 4.4	Wifi	802.11 a/b/g/n (2.4G/5G Dual-band)
Rugged Durability	IP65 waterproof rating	GPS	U-blox NEO-7
Display & Touch	10.1 inch IPS 1280 x 800 resolution	USB interface	Yes, micro USB 5pin; USB 2.0 Host
Cameras	2MP/5MP	Headphone Jack	3.5mm
Memory & Storage	2 GB RAM + 32 GB Internal storage	Network	Standard is 3G WCDMA 900/2100MHz, 4G LTE is optional, 4G Frequency: FDD LTE Bands: B1/B3/B5/B7/B8/B20; TDD LTE Bands: B38/B39/B40/B41.
NFC Function	YES- 13.56MHz Support ISO/IEC 14443A/14443B/15693/18092/ mifare, readable distance: about 4cm; optional	Expandable Memory	TF card

NOTE: specifications subject to change without notice.

AG101-A-SX-4-2-IP65-V3

|||||

The AG101-A-SX-4-2-IP65-V3 is a 10.1" rugged tablet with IP65 rating and MIL-STD-810G certification. This tablet has an Android 5.1 operating system, a quad core processor, and TF card for expandable memory.

Customization Options:

- Software: preloaded apps, custom settings, part number change, custom logo
- Hardware: custom plastic color, rubber case



CPU	Intel Atom Cherry-Trail Z8350 Quad-core 1.44Ghz, Turbo 1.92GHz	Battery	Lithium 3.7V/10000mAh
Operating System	Android 5.1	Wifi	802.11 b/g/n/ac wireless 2.4G/5G Dual-band wifi
Rugged Durability	Waterproof and dustproof rate: IP65; MIL-STD-810G rating	GPS	U-blox NEO-7
Display & Touch	10.1 inch IPS 1280 x 800 resolution	USB interface	1*RJ45 100M/1000M Ethernet Port, 1*DB9 RS232 Serial port, 1*Micro USB, 1*USB2.0 Host, 1*DC port 1*TF Card Slot, 1*HDMI 1.4a Port, 1*ear-phone jack, 1*Sim Card Slot,
Cameras	Front 2MP/Back 5MP	Network	Network: Standard is 3G WCDMA 900/2100MHz, 4G LTE is optional, 4G Frequency: FDD LTE Bands: B1/B3/B5/B7/B8/B20; TDD LTE Bands: B38/B39/B40/B41
Memory & Storage	2 GB RAM	Expandable Memory	TF card
NFC Function	13.56Mhz, optional		

NOTE: specifications subject to change without notice.

AC101-W-SX-4-2-IP65-V1

|||||

The AC101-W-SX-4-2-IP65-V1 is a 10.1" rugged tablet with IP65 rating and MIL-STD-810G certification. This tablet has a Windows 10 Home operating system, a quad core processor, and TF card for expandable memory.

Customization Options:

- Software: preloaded apps, custom settings, part number change, custom logo
- Hardware: custom plastic color, rubber case



CPU	Intel Atom Bay-Trail Z3735F Quad-core 1.33-1.8GHz	Battery	Lithium 3.7V/10000mAh
Operating System	Windows 10 Home	Wifi	802.11 a/b/g/n (2.4G/5G Dual-band)
Rugged Durability	Waterproof and dustproof rate: IP65; MIL-STD-810G rating	GPS	U-blox NEO-7
Display & Touch	10.1 inch IPS 1280 x 800 resolution	USB interface	Yes, micro USB 5pin; USB 2.0 Host
Cameras	Front 2MP/Back 5MP	Network	Standard is 3G WCDMA 900/2100MHz, 4G LTE is optional, 4G Frequency: FDD LTE Bands: B1/B3/B5/B7/B8/B20; TDD LTE Bands: B38/B39/B40/B41
Memory & Storage	32 GB internal storage + 2 GB RAM	Expandable Memory	TF card
NFC Function	13.56MHz Support ISO/IEC 14443A/14443B/15693/18092/ mifare, readable distance: about 4cm, optional		

NOTE: specifications subject to change without notice.

AG101-W-SX-4-2-IP65-V2

|||||

AG101-W-SX-4-2-IP65-V2 is a 10.1" rugged tablet with Windows 10 operating system, a Quad-Core Intel Atom Cherry-Trail Z8350 CPU, and WXGA 1280 x 800 resolution. AG101-W-SX-4-2-IP65-V2 features an IP65 ingress protection rating, RJ45 ethernet connection, HDMI output, and a rechargeable Lithium battery.

Customization Options:

- Software: preloaded apps, custom settings, part number change, custom logo
- Hardware: custom plastic color, rubber case



CPU	Intel Atom Cherry-Trail Z8350 Quad-core 1.44Ghz, Turbo 1.92GHz	Battery	Lithium 3.7V/10000mAh
Operating System	Windows 10 Home	Wifi	802.11 b/g/n/ac wireless 2.4G/5G Dual-band wifi
Rugged Durability	Waterproof and dustproof rate: IP65; MIL-STD-810G rating	GPS	U-blox NEO-7
Display & Touch	10.1 inch IPS 1280 x 800 resolution	USB interface	1*RJ45 100M/1000M Ethernet Port, 1*DB9 RS232 Serial port, 1*Micro USB, 1*USB2.0 Host, 1*DC port 1*TF Card Slot, 1*HDMI 1.4a Port, 1*ear-phone jack, 1*Sim Card Slot,
Cameras	Front 2MP/Back 5MP	Network	Network: Standard is 3G WCDMA 900/2100MHz, 4G LTE is optional, 4G Frequency: FDD LTE Bands:B1/B3/B5/B7/B8/B20; TDD LTE Bands: B38/B39/B40/B41
Memory & Storage	32 GB EMMC internal storage + 2 GB RAM	Expandable Memory	TF card
NFC Function	13.56Mhz, optional		

NOTE: specifications subject to change without notice.

AG101-L-WX-4-2-IP65-V1

|||||

AG101-L-WX-4-2-IP65-V1 is a 10.1" rugged tablet with Linux V16.4 operating system, a Quad-Core Intel Celeron Processor N2930 CPU, and WXGA 1280 x 800 resolution. AG101-L-WX-4-2-IP65-V1 features an IP65 ingress protection rating, micro HDMI output, and a rechargeable Lithium battery.

Customization Options:

- Software: preloaded apps, custom settings, part number change, custom logo
- Hardware: custom plastic color, rubber case



CPU	Intel Celeron Processor N2930 Quad-core 2.16GHz	Battery	Rechargeable Lithium Battery 3.7V/8000mAh
Operating System	Linux Ubuntu V16.4	Wifi	802.11 b/g/n
Rugged Durability	Waterproof and dustproof rate: IP65; MIL-STD-810G rating	GPS	Optional
Display & Touch	10.1 inch IPS 1280 x 800; 1920 x 1200 optional resolution	USB interface	2 x USB 3.1
Cameras		Sensors	UHF RFID: is optional
Memory & Storage	32G EMMC / 64GB or 128G EMMC is optional internal storage + 2/4 GB (optional) RAM	Network	3G & 4G optional
NFC Function	No	Expandable Memory	None

NOTE: specifications subject to change without notice.

AG101-L-WX-4-2-IP65-V2

|||||

The AG101-L-WX-4-2-IP65-V2 is a 10.1" rugged tablet with IP65 rating and MIL-STD-810G certification. This tablet has a Linux V16.6 operating system and a quad core processor, 2/4 GB options for RAM and flexible memory options.

Customization Options:

- Software: preloaded apps, custom settings, part number change, custom logo
- Hardware: custom plastic color, rubber case



CPU	Intel Celeron Processor N2930 Quad-core 2.16GHz	Battery	Rechargeable Lithium Battery 3.7V/8000mAh
Operating System	Linux V16.6	Wifi	802.11 b/g/n
Rugged Durability	Waterproof and dustproof rate: IP65; MIL-STD-810G rating	GPS	Optional
Display & Touch	10.1 inch IPS 1280 x 800; 1920 x 1200 optional resolution	USB interface	2 x USB 3.1
HDMI Port	Micro HDMI	Sensors	UHF RFID: is optional
Memory & Storage	32G EMMC / 64GB or 128G EMMC is optional internal storage + 2/4 GB (optional) RAM	Network	3G & 4G optional
NFC Function	No	Expandable Memory	None

NOTE: specifications subject to change without notice.

AG101-W-WX-4-2-IP65-V1

|||||

The AG101-W-WX-4-2-IP65-V1 is a 10.1" rugged tablet with IP65 rating and MIL-STD-810G certification. This tablet has a Windows 7 operating system and a quad core processor, 2/4 GB options for RAM and flexible memory options.

Customization Options:

- Software: preloaded apps, custom settings, part number change, custom logo
- Hardware: custom plastic color, rubber case



CPU	Intel Celeron Processor N2930 Quad-core 2.16GHz	Battery	Rechargeable Lithium Battery 3.7V/8000mAh
Operating System	Windows 7	Wifi	802.11 b/g/n
Rugged Durability	Waterproof and dustproof rate: IP65; MIL-STD-810G rating	GPS	Optional
Display & Touch	10.1 inch IPS 1280 x 800; 1920 x 1200 optional resolution	USB interface	2 x USB 3.1
HDMI Port	Micro HDMI	Sensors	UHF RFID: is optional
Memory & Storage	32G EMMC / 64GB or 128G EMMC is optional internal storage + 2/4 GB (optional) RAM	Network	3G & 4G optional
NFC Function	No	Expandable Memory	None

NOTE: specifications subject to change without notice.

AG101-W-WX-4-2-IP65-V2

|||||

The AG070-A-WX-4-2-IP67-VB is a 10.1" rugged tablet with IP65 rating and MIL-STD-810G certification. This tablet has a Windows 10 operating system and a quad core processor, 3/4 GB options for RAM and flexible memory options.

Customization Options:

- Software: preloaded apps, custom settings, part number change, custom logo
- Hardware: custom plastic color, rubber case



CPU	Intel Celeron Processor N2930 Quad-core 2.16GHz	Battery	Rechargeable Lithium Battery 3.7V/8000mAh
Operating System	Windows 10	Wifi	802.11 b/g/n
Rugged Durability	Waterproof and dustproof rate: IP65; MIL-STD-810G rating	GPS	Optional
Display & Touch	10.1 inch IPS 1280 x 800; 1920 x 1200 optional resolution	USB interface	2 x USB 3.1
HDMI Port	Micro HDMI	Sensors	UHF RFID: is optional
Memory & Storage	32G EMMC / 64GB or 128G EMMC is optional internal storage + 3/4 GB (optional) RAM	Network	3G & 4G optional
NFC Function	No	Expandable Memory	None

NOTE: specifications subject to change without notice.

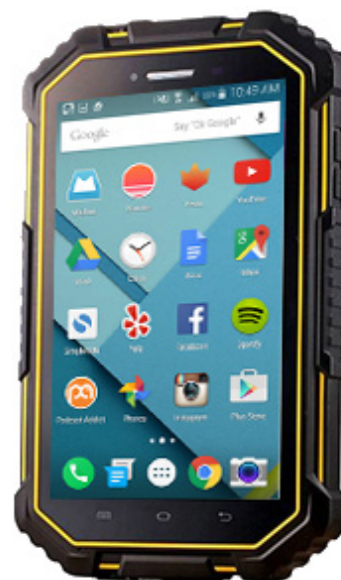
AG070-A-WX-4-2-IP67-VB

|||||

The AG070-A-WX-4-2-IP67-VB is a 7" rugged tablet with IP67 rating and MIL-STD-810G certification. This tablet has an Android 6.0 operating system and a quad core processor, 2 GB of RAM, 16 GB of internal memory, expandable memory up to 32 GB with micro card.

Customization Options:

- Software: preloaded apps, custom settings, part number change, custom logo
- Hardware: custom plastic color, rubber case



CPU	MediaTek MTK6735 Quad-core, Cortex-A7 1.3GHz	Battery	Lithium 7000 mAh
Operating System	Android 6.0	Wifi	Yes IEEE 802.11 b/g/n
Rugged Durability	IP67 Waterproof and dust-proof; MIL-STD-810G rating	GPS	GPS + Glonass or GPS + Beidou is Optional
Display & Touch	7 inch Multi Touch Capacitive IPS HD screen 1280 x 800 resolution	USB interface	1, 5-pin micro USB OTG
Cameras	Front 2.0MP/Back 8MP (software for rear camera is 13MP)	Sensors	"G-sensor, Light-sensor, Gyroscope, Compass
Memory & Storage	16GB internal storage + 2 GB RAM	Network	"3G WCDMA: B1/B3/B8=2100/1800/900MHZ; 4G TDD-LTE: B38/B39/B40/B41=2600/1900/2300/2500MHZ; 4G FDD LTE: B1/B3/B7/B8/B20=2100/1800/2600/900/800MHZ. American Version (optional): 4G FDD: B1/B4/B5/B7/B17=2100/1700/850/2600/700MHZ, support Quad-Band GSM and 3G WCDMA: B1/B2/B5=2100/1900/850MHZ "
NFC Function	Frequency is 13.56Mhz	Expandable Memory	Micro card slot support max 32 GB

NOTE: specifications subject to change without notice.

AG070-A-HD-4-3-IP67-V1

|||||

The AG070-A-HD-4-3-IP67-V1 is a 7" rugged tablet with IP67 rating. This tablet has an Android 5.1 operating system and a quad core processor, 3 GB of RAM, 32 GB of internal memory, expandable memory up to 64 GB with microSD.

Customization Options:

- Software: preloaded apps, custom settings, part number change, custom logo
- Hardware: custom plastic color, rubber case



CPU	MediaTek MTK6735 Quad-core, Cortex-A53 1.5GHz	NFC Function	Frequency is 13.56Mhz, Support ISO14443A/B/ISO15693, Optional- UHF RFID: 865MHZ-915MHZ, readable distance is about 1.5-2.0 Meters, optional
Operating System	Android 5.1	Battery	Built-in 9650mAh Lithium Battery 9650mAh
Rugged Durability	IP67 Waterproof and dust-proof	Wifi	802.11 b/g/n/ac (2.4G/5G Dual band)
Display & Touch	7 inch Capacitive Multi Touch IPS 1280 x 720 resolution	GPS	Glomass Optional
Cameras	Front 5MP/Back 13MP	USB interface	1*5-pin micro USB (OTG)
Memory & Storage	32 GB internal storage + 3 GB RAM	Expandable Memory	microSD, Support up to 64GB

NOTE: specifications subject to change without notice.

AG080-A-WX-10-4-IP68-V1



The AG080-A-WX-10-4-IP68-V1 is an 8" rugged tablet with IP68 rating and MIL-STD-810G certification. This tablet has an Android 8.1 operating system and a deca core processor, 4 GB of RAM, 64 GB of internal memory.

Customization Options:

- Software: preloaded apps, custom settings, part number change, custom logo
- Hardware: custom plastic color, rubber case



CPU	MTK6797 Deca(10)-core 2.3GHZ	Battery	Built in 3.7V Lithium 10000mAh
Operating System	Android 8.1	Wifi	IEEE 802.11 a/b/g/n 2.4G+5Ghz dual-band WIFI
Rugged Durability	IP68 Waterproof and dust- proof; MIL-STD-810G rating	GPS	GPS/Glonass/Beidou
Display & Touch	8 inch Capacitive Multi Touch IPS with G+F+F Corning Go- rilla 3rd gen glass. 1280 x 800 pixels	USB interface	1 x 5-Pin Micro USB
Cameras	Front 2MP/Back 8MP	Sensors	G/Orientation sensor, Proxim- ity sensor, Light sensor, Accel- eration sensor, Magnetic field sensor, Geomagnetic Rotation sensor
Memory & Storage	64 GB internal storage + 4 GB RAM	External Storage	Support max 128GB Micro-SD card
NFC Function	13.56Mhz, optional	Product Dimensions	243.2 mm x 158mm x 23mm

NOTE: specifications subject to change without notice.

AG080-A-F-8-3-IP68-V2

|||||

The AG080-A-F-8-3-IP68-V2 is an 8" rugged tablet with IP68 rating and MIL-STD-810G certification. This tablet has an Android 7.1 operating system and an octa core processor, 3 GB of RAM, 32 GB of internal memory.

Customization Options:

- Software: preloaded apps, custom settings, part number change, custom logo
- Hardware: custom plastic color, rubber case



CPU	Qualcomm MSM8937 Octa-core 1.5GHz Support 4G FDD and TDD	Battery	Built in 3.7V Lithium 8500mAh
Operating System	Android 7.1	Wifi	802.11 b/g/n
Rugged Durability	IP68 Waterproof and dust-proof; MIL-STD-810G rating	GPS	GPS/Glonass/Beidou
Display & Touch	8 inch Capacitive Multi Touch IPS 1280 x 800 Pixels, FHD 1920 x 1080pxs is optional resolution	USB interface	1*MICRO USB
Cameras	Front 2MP/Back 13MP	Sensors	UHF RFID: readable distance is about 7.0 Meters,Optional; ID card reader module: Optional; 2D Barcode scanner module: Optional; Built-in fingerprint scanner: capacitive fingerprint scanner 508DPI, Optional
Memory & Storage	32 GB internal storage + 3 GB RAM	Expandable Memory	None
NFC Function	13.56Mhz, optional		

NOTE: specifications subject to change without notice.

AG080-W-WX-4-2-IP67-V1

|||||

The AG080-W-WX-4-2-IP67-V1 is an 8" rugged tablet with IP67 rating and MIL-STD-810G certification. This tablet has a Windows 10 Home operating system and a quad core processor, 2 GB of RAM, 32 GB of internal memory and TF card for expandable memory.

Customization Options:

- Software: preloaded apps, custom settings, part number change, custom logo
- Hardware: custom plastic color, rubber case



CPU	Intel Bay-Trail Z3735F Quad-core Turbo	Battery	Lithium 8500mAh
Operating System	Windows 10 Home	Wifi	802.11 b/g/n/ac 2.4G/5G Dual-band wifi
Rugged Durability	IP67 Waterproof and dust-proof; MIL-STD-810G rating	GPS	U-blox NEO 7
Display & Touch	8 inch Capacitive Multi-touch TFT-LCD 1280 x 800 resolution	USB interface	1 x Micro USB, 1 x USB 2.0 Host
Cameras	Front 2MP/Back 5MP	Sensors	Optional: 1D or 2D barcode scanner, NFC
Memory & Storage	32 GB internal storage + 2 GB RAM	Network	3G WCDMA 900/2100MHz, 4G
NFC Function	NXP NFC 13.56MHz, optional	Expandable Memory	TF card

NOTE: specifications subject to change without notice.

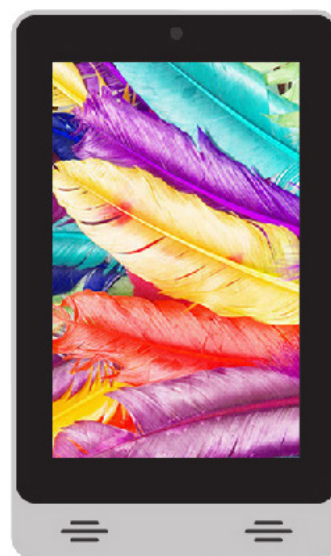
AG070-A-WX-4-1-IPNA-V1

|||||

AG070-A-WX-4-1-IPNA-V1 is a 7.0" tablet with Android 6.0.1 operating system, a Quad-Core Rockchip 3128 CPU, and WXGA 1280 x 800 resolution. AG070-A-WX-4-1-IPNA-V1 features rear VESA mounting, RJ45 POE, and wired DC power input.

Customization Options:

- Software: preloaded apps, custom settings, part number change, custom logo
- Hardware: most hardware customizations are available



CPU	Quad core Rockchip 3128 1.6GH	Battery	None, 12V DC input
Operating System	Android 6.0.1	Wifi	802.11 b/g/n
Rugged Durability	No IP rating	Audio Codec	MP3 / WMA / WAV / AAC / FLAC / OGG
Display & Touch	7 inch 10-Point capacitive touch IPS 1280 x 800 resolu- tion	Video Codec	MOV 1080P/AVI/WMV/RM/ RMVB/3GP/MKV/MP4 /ASF/ VOB
Cameras	Front 2MP	Product Dimensions	215mm x 126mm x 26mm
Memory & Storage	8 GB internal storage + 1 GB RAM	Network	1 x RJ45 (supports POE)
NFC Function	No	Expandable Memory	SD Card

NOTE: specifications subject to change without notice.

AG080-A-WX-4-1-IPNA-V1

|||||

The AG080-A-WX-4-1-IPNA-V1 is an 8" tablet featuring a capacitive multi touch TFT screen, Android operating system and a quad core processor. The tablet has 1 GB of RAM, 8 GB of internal memory and TF card for expandable memory.

Customization Options:

- Software: preloaded apps, custom settings, part number change, custom logo
- Hardware: most hardware customizations are available



CPU	Spreadtrum SC9832E Cortex A53 MP4 quad-core, 1.4Ghz	Battery	3600mAh
Operating System	Android 8.1 Go	Audio Codec	MP3/WMA/WAV/AAC/FLAC/OGG
Rugged Durability	No IP rating	Video Codec	MOV 1080P/AVI /WMV/RM/RMVB/3GP/MKV/MP4/AS/VOB
Display & Touch	8 inch Multi-touch capacitive TFT-LCD 1280 x 800 resolution	USB interface	Micro USB (x1), USB Host type A (x1)
Cameras	Front .3MP/Back 2MP	Headphone Jack	3.5mm- Audio Out
Memory & Storage	8 GB internal storage + 1 GB RAM	SIM Card Slot	Yes
NFC Function	No	Expandable Memory	TF Card

NOTE: specifications subject to change without notice.

AG101WX-A-4-1-IPNA-V1

|||||

The AG101WX-A-4-1-IPNA-V1 is a 10.1" tablet featuring a capacitive multi touch IPS screen, Android operating system and a quad core processor. The tablet has 1 GB of RAM, 8 GB of internal memory and SD/MMC card for expandable memory up to 32 GB.

Customization Options:

- Software: preloaded apps, custom settings, part number change, custom logo
- Hardware: most hardware customizations are available



CPU	A33 quad core processor, clocked 1.4Ghz	Battery	External 12V/5A Power Adapter
Operating System	Android 4.4.2	Wifi	802.11 b/g/n
Rugged Durability	No IP rating	USB interface	USG OTG, USB 2.0 x 3
Display & Touch	10.1 inch Capacitive Multi Touch IPS 1280 x 800 resolution	Audio Codec	MP3, MIDI, AMR, AAC, WAV
Cameras	Front 2MP	Video Codec	MPEG-1, MPEG-2, MPEG-4, H.263, H.264, VC1, RV, Support up to 1080p
Memory & Storage	8 GB internal storage + 1 GB RAM	Network	RJ45 ethernet, Support external 3G USB dongle
NFC Function	No	Expandable Memory	SD / MMC Card up to 32 GB

NOTE: specifications subject to change without notice.

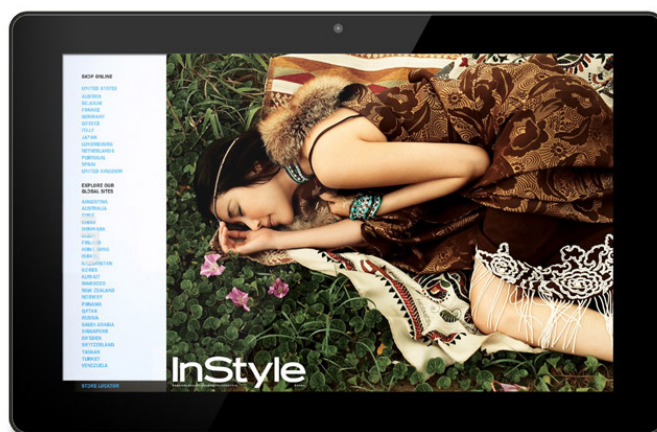
AG101-A-WX-4-2-IPNA-V3

|||||

The AG101-A-WX-4-2-IPNA-V3 is a 10.1" tablet featuring a capacitive touch IPS screen, Android 8.1 operating system and a quad core processor. The tablet has 2 GB of RAM, 16 GB of internal memory and SD card for expandable memory.

Customization Options:

- Software: preloaded apps, custom settings, part number change, custom logo
- Hardware: most hardware customizations are available



CPU	RK3288 Quad core cortex A9,1.8G	Battery	5000mah/3.7V
Operating System	Android 8.1	Wifi	802.11 a/b/g/n
Rugged Durability	No IP rating	Headphone Jack	3.5mm earphone
Display & Touch	10.1 inch 10-Point capacitive touch IPS 1280 x 800 resolution	USB interface	Micro USB OTG, USB Host (x3)
Cameras	Front 2MP	Product Dimensions	3.5mm earphone
Memory & Storage	16 GB internal storage + 2 GB DDR3 RAM	Speaker	1.5W (x2)
NFC Function	No	Expandable Memory	SD card

NOTE: specifications subject to change without notice.

AG101-A-WX-4-1-IPNA-V1

|||||

The AG101-A-WX-4-1-IPNA-V1 is a 10.1" tablet featuring a capacitive touch TFT screen, Android operating system and a quad core processor. The tablet has 1 GB of RAM, 8 GB of internal memory and SD card for expandable memory.

Customization Options:

- Software: preloaded apps, custom settings, part number change, custom logo
- Hardware: most hardware customizations are available



CPU	RK3128,Quad-core Cortex-A53 up to 1.6GHz	USB interface	USB Host, Mini USB OTG
Operating System	Android 6.0	Wifi	802.11 b/g/n
Rugged Durability	No IP rating	Audio Codec	"MP3/WMA/AAC etc.
Display & Touch	10.1 inch 10-Point capacitive touch IPS 1280 x 800 resolution	Video Codec	MPEG-1,MPEG-2,MPEG-4,H.263,H.264,VC1,RV etc.,support up to 1080p
Cameras	Front 2MP	SIM Card Slot	Internal 3G /4G SIM data (OEM OPTION)
Memory & Storage	8 GB internal storage + 1 GB RAM	Network	Internal 3G /4G SIM data (OEM OPTION)
NFC Function	No	Expandable Memory	SD card

NOTE: specifications subject to change without notice.

AG101-A-WX-4-1-IPNA-V2

|||||

AG101-A-WX-4-1-IPNA-V2 is a 10.1" tablet with Android 6.0 operating system, a Quad-Core Rockchip 3128 CPU, and WXGA 1280 x 800 resolution. AG101-A-WX-4-1-IPNA-V2 features rear VESA mounting, RJ45 POE, HDMI output, and a wired DC power input.

Customization Options:

- Software: preloaded apps, custom settings, part number change, custom logo
- Hardware: most hardware customizations are available



CPU	RK3128 Quad core cortex A9, 1.6GHz	Battery	Optional- 5000mah/3.7V
Operating System	Android 6.0	Wifi	802.11 b/g/n
Rugged Durability	No IP rating	Product Dimensions	260mm x 180mm x 30mm
Display & Touch	10.1 inch 10-Point capacitive touch IPS 1280 x 800 resolution	USB interface	Micro USB OTG, USB Host (x3)
Cameras	Front 2MP	Headphone Jack	3.5mm earphone
Memory & Storage	8 GB internal storage + 1 GB RAM	HDMI Port	HDMI Output
NFC Function	No	Expandable Memory	SD Card

NOTE: specifications subject to change without notice.

AG121-A-WX-4-1-IPNA-V1

|||||

The AG121-A-WX-4-1-IPNA-V1 is a 12.1" tablet featuring a capacitive multi touch TFT screen, Android operating system and an octa-core processor. The tablet has 1 GB of RAM, HDMI output and SD card for expandable memory up to 32 GB.

Customization Options:

- Software: preloaded apps, custom settings, part number change, custom logo
- Hardware: most hardware customizations are available



CPU	A64 Quad-core Cortex-A53	Battery	None, 12V/2A DC Input
Operating System	Android 6.0.1	Wifi	802.11 b/g/n
Rugged Durability	No IP rating	Product Dimensions	310mm x 215mm x 25.5mm
Display & Touch	12.1 inch Capacitive Multi Touch TFT-LCD 1280 x 800 resolution	Audio Codec	MP3/WMA/AAC etc
Cameras	Front 2MP (optional)	Video Codec	MPEG-1,MPEG-2,MPEG-4,H.263,H.264,VC1,RV etc., support up 1080P
Memory & Storage	8 GB internal storage + 1 GB RAM	Speaker	2W (x2)
NFC Function	No	Expandable Memory	SD Card (Max. 32 GB)

NOTE: specifications subject to change without notice.

AG156-A-F-4-1-IPNA-V1

|||||

The AG156-A-F-4-1-IPNA-V1 is a 15.6" tablet with an Android operating system. The quad-core processor features 1 GB of RAM with 8 GB of internal storage space.

Customization Options:

- Software: preloaded apps, custom settings, part number change, custom logo
- Hardware: most hardware customizations are available



CPU	Rockchip 3188 Quad Core 1.6GHz	Battery	5000mah/3.7V
Operating System	Android 4.4 (5.1- Optional)	Wifi	802.11 b/g/n
Rugged Durability	No IP rating	USB interface	Micro USB OTG, 3 x USB Host
Display & Touch	15.6 inch 10-Point capacitive touch TFT LCD 1920 x 1080 resolution	Audio Codec	MP3 / WMA / WAV / AAC / FLAC / OGG
Cameras	Front 2MP	Video Codec	MOV 1080P/AVI/WMV/RM/ RMVB/3GP/MKV/MP4 /ASF/ VOB
Memory & Storage	8 GB internal storage + 1 GB RAM	Network	1 x RJ45 (supports POE 802.3 AF/AT)
NFC Function	No	Expandable Memory	None

NOTE: specifications subject to change without notice.

AG070-A-WS-8-2-IPNA-V1

|||||

The AG070-A-WS-8-2-IPNA-V1 is a 7 inch tablet with an Android operating system. The octa core processor features 2 GB of RAM with 8 GB of internal storage space.

Customization Options:

- Software: preloaded apps, custom settings, part number change, custom logo
- Hardware: most hardware customizations are available



CPU	RK3368 64 bit Octa-core Cortex-A53 up to 1.5GHz
Operating System	Android 6.0
Rugged Durability	No IP rating
Display & Touch	7 inch Multi Points Capacitive Touch TFT-LCD 1024 x 600 resolution
Cameras	Front 0.3MP/Back 0.3MP
Memory & Storage	8 GB internal storage + 2 GB RAM
NFC Function	No

Battery	Lithium 3000mAh- 5V/2A
Wifi	Built in 802.11 b/g/n
GPS	No GPS
USB interface	1 x USB Type A
Headphone Jack	3.5 mm audio out
Expandable Memory	TF card

NOTE: specifications subject to change without notice.

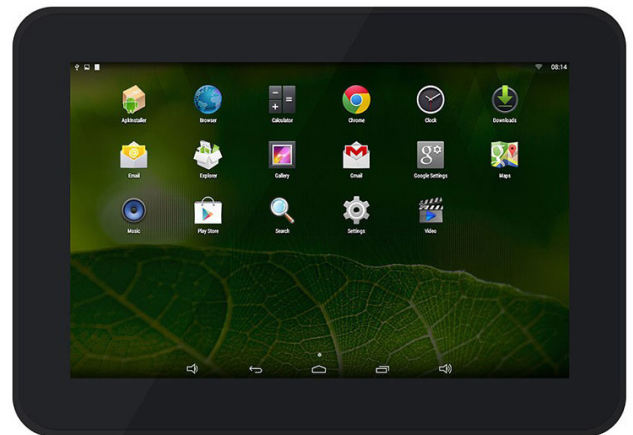
AG080-A-WX-4-2-IPNA-V1

|||||

The AG080-A-WX-4-2-IPNA-V1 is an 8 inch tablet with an Android 8.1 operating system. The quad core processor features 2 GB of RAM with 16 GB of internal storage space.

Customization Options:

- Software: preloaded apps, custom settings, part number change, custom logo
- Hardware: most hardware customizations are available



CPU	RK3288, Quad Core, Cortex A17 CPU	Battery	None, 12V DC Input
Operating System	Android 8.1	Wifi	802.11 b/g/n
Rugged Durability	No IP rating	HDMI Port	Yes
Display & Touch	8 inch 5- Point Capacitive Multi-touch TFT-LCD 1280 x 800 resolution	USB interface	USB Host (x3), Micro USB OTG
Cameras	Front 2MP (optional)	Product Dimensions	212.20mm x 147.6mm x 31mm
Memory & Storage	16GB internal storage + 2 GB RAM	Headphone Jack	3.5 mm
NFC Function	No	Speaker	2x 1.5 W

NOTE: specifications subject to change without notice.

THANK YOU

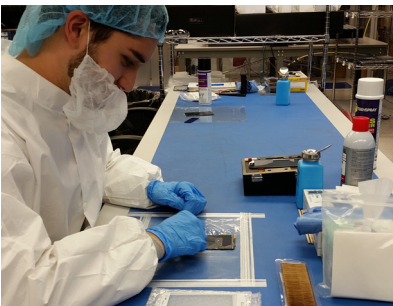
Thank You

|||||

COMMUNITY OF EXPERTS

Whether we are met with a new design or challenged with improving an existing design, AGDisplays supports your team by delivering unparalleled LCD expertise and technology. AGDisplays' partners benefit from our efficient design process and our dedication to creating quality design solutions.

We saw the need for off the shelf products, so we've added an expansive line of open/closed frame LCDs, digital signage, and all-in-one products. We offer unique LCD products like advanced touchscreen tabletops, high quality medical displays and rugged mobile devices. All of which can benefit from our value add integration services. Our products are used across many industries including Military, Avionics, Marine, Industrial, Medical, Transportation and many more.



CERTIFICATIONS

AGDisplays values high-quality working and design standards. We support your teams with the knowledge & expertise needed to make strategic design and manufacturing decisions.



CERTIFICATED PART 145
REPAIR STATION



AGDISPLAYS IS
ISO 14001, 45001 & R2
CERTIFIED

CONTACT US

HEADQUARTERS

AGDisplays, a dba of AssetGenie, Inc.
220 Huff Ave, Suite 400
Greensburg, PA 15601

CONTACT BY PHONE

Toll Free: 844-841-6851
Office: 724-552-4904
Fax: 724-552-4905

CONTACT BY EMAIL

sales@agdisplays.com
info@agdisplays.com
support@agdisplays.com

GET CONNECTED WITH AGDISPLAYS

Join our social community to stay in touch with all of our latest news, events and promotions.

